

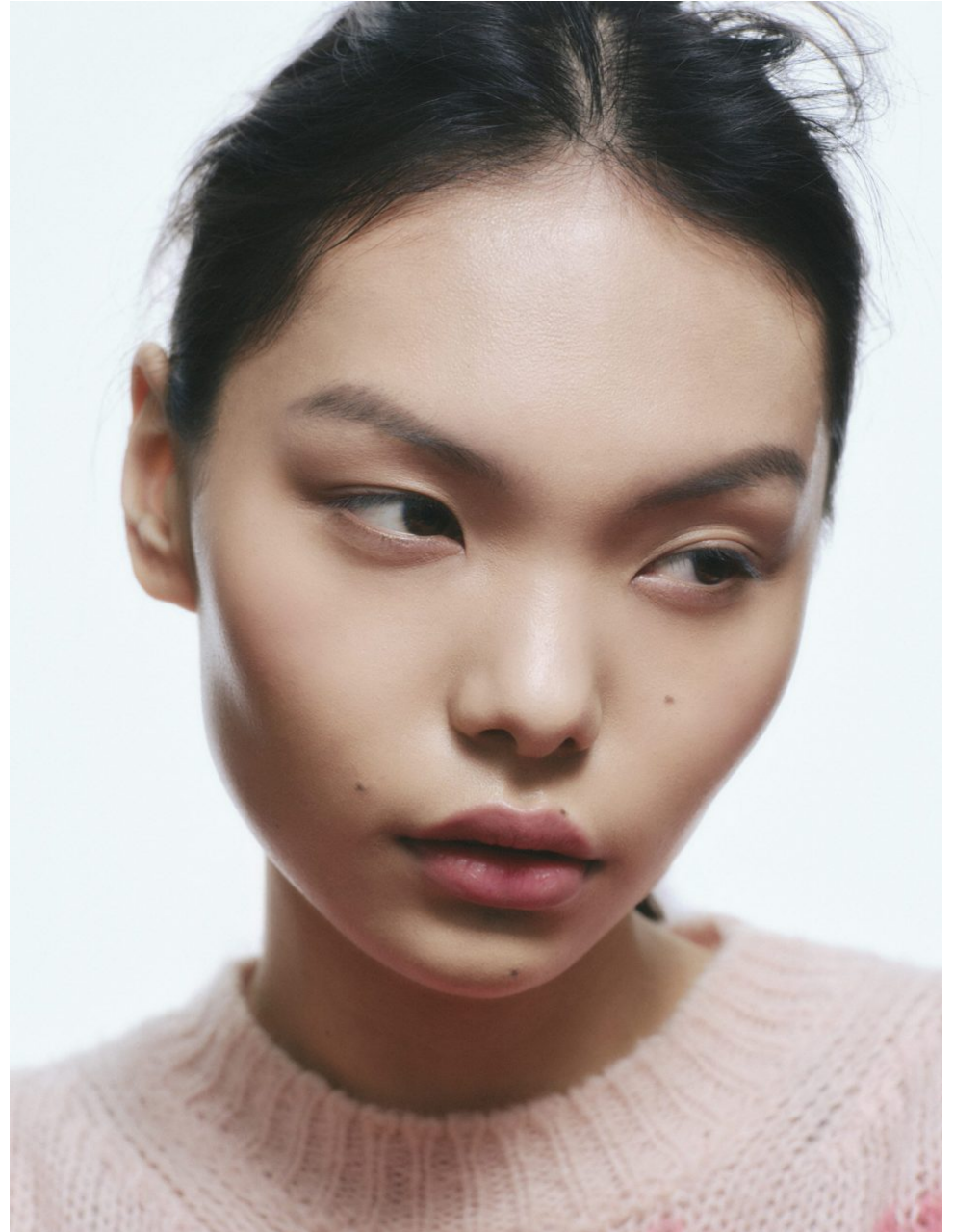
# Tashi Yangzom

UK

**Height** 59.5 **Bust** 32 **Waist** 25 **Hips** 35  
**Shoes** 6.5 **Hair** Black **Eyes** Brown

EU

**Height** 1.77 **Bust** 81 **Waist** 64 **Hips** 89.5  
**Shoes** 39.5 **Hair** Black **Eyes** Brown



# THE HIVE

---



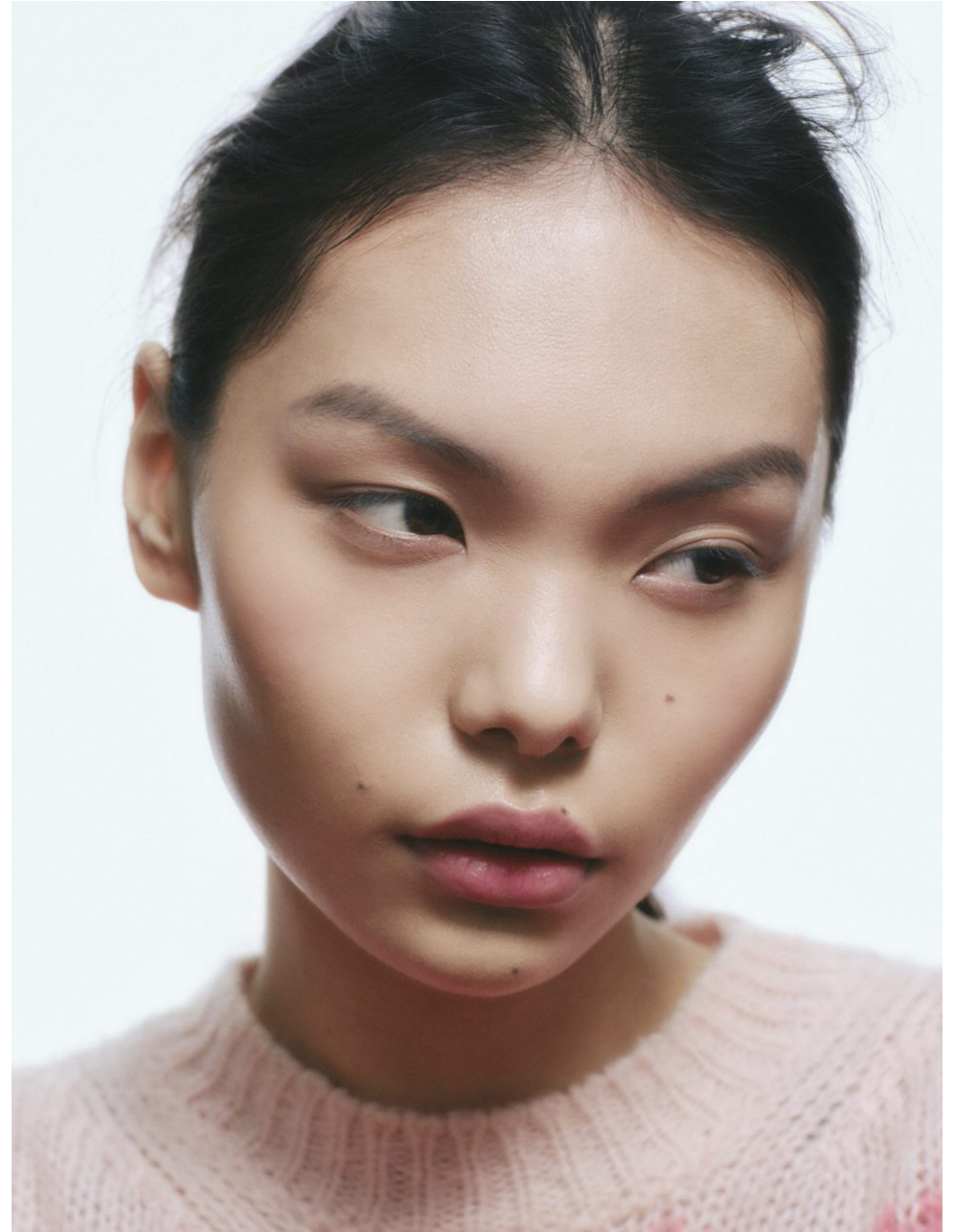
# THE HIVE

---



# THE HIVE

---



# THE HIVE

---



# THE HIVE

---



# THE HIVE



# THE HIVE



# THE HIVE

---



# THE HIVE

---



# THE HIVE

---



# THE HIVE

---



## V TRENDS

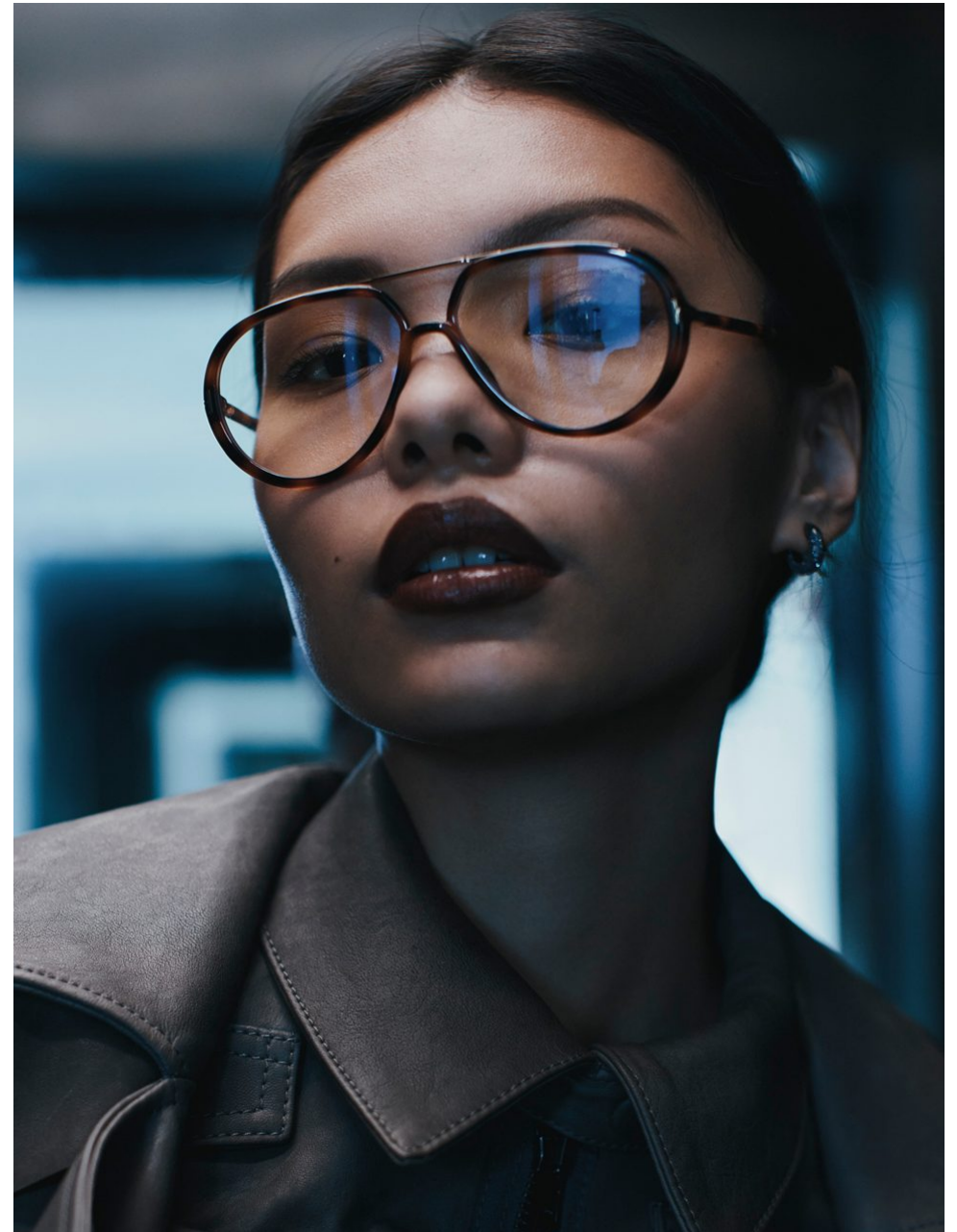
The saying of the time, "It seems like nobody wants to work these days," is reaching its expiration point. With suave suiting and tasty tailoring dominating our social feeds via the proverbial mirror selfie, it seems the working woman is having her moment. Whether you're on the clock or not, put your camera to the task and snap a pic if the 'fit hits



All clothing, necklace, shoes MICHAEL KORS  
Glasses TOM FORD



Tashi wears all clothing and accessories TORY BURCH



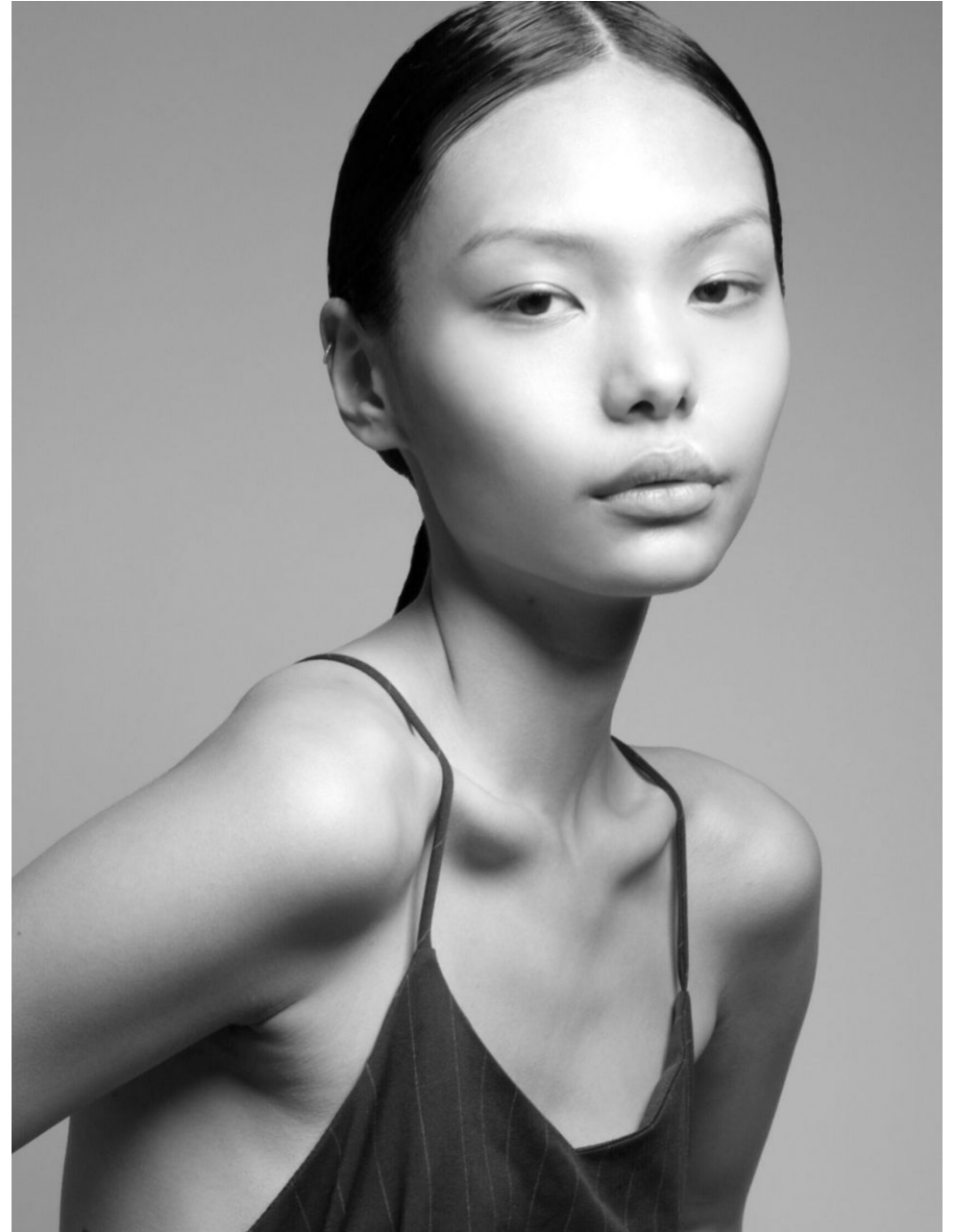
Dress GUESS  
Sunglasses RAY-BAN  
Bag BRANDON BLACKWOOD



Coat and bag STELLA MCCARTNEY  
Sunglasses JACQUES MARIE MAGE

# THE HIVE

---



# THE HIVE

---



# THE HIVE

---

