

# Sass Thomas

UK

**Height** 5'8.5 **Bust** 32 **Waist** 24 **Hips** 37  
**Shoes** 7 **Hair** Dark Blonde **Eyes** Blue

EU

**Height** 1.73 **Bust** 81 **Waist** 61 **Hips** 94  
**Shoes** 40 **Hair** Dark Blonde **Eyes** Blue



# THE HIVE

---



# THE HIVE

---



# THE HIVE

---



# THE HIVE

---



# THE HIVE



# THE HIVE

---



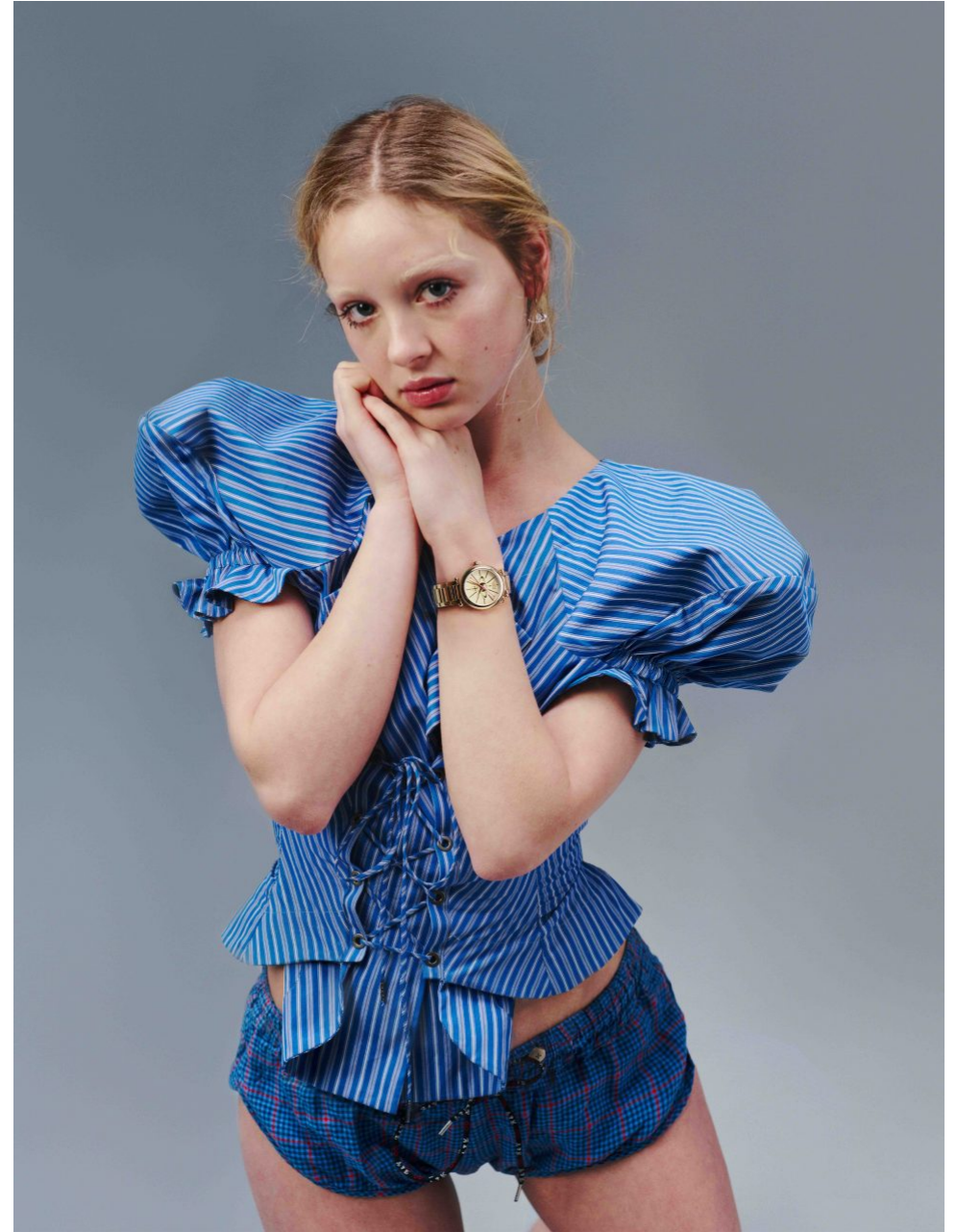
# THE HIVE

---



# THE HIVE

---



# THE HIVE



# THE HIVE



# THE HIVE

---



# THE HIVE



# THE HIVE

---



# THE HIVE

---



# THE HIVE

---



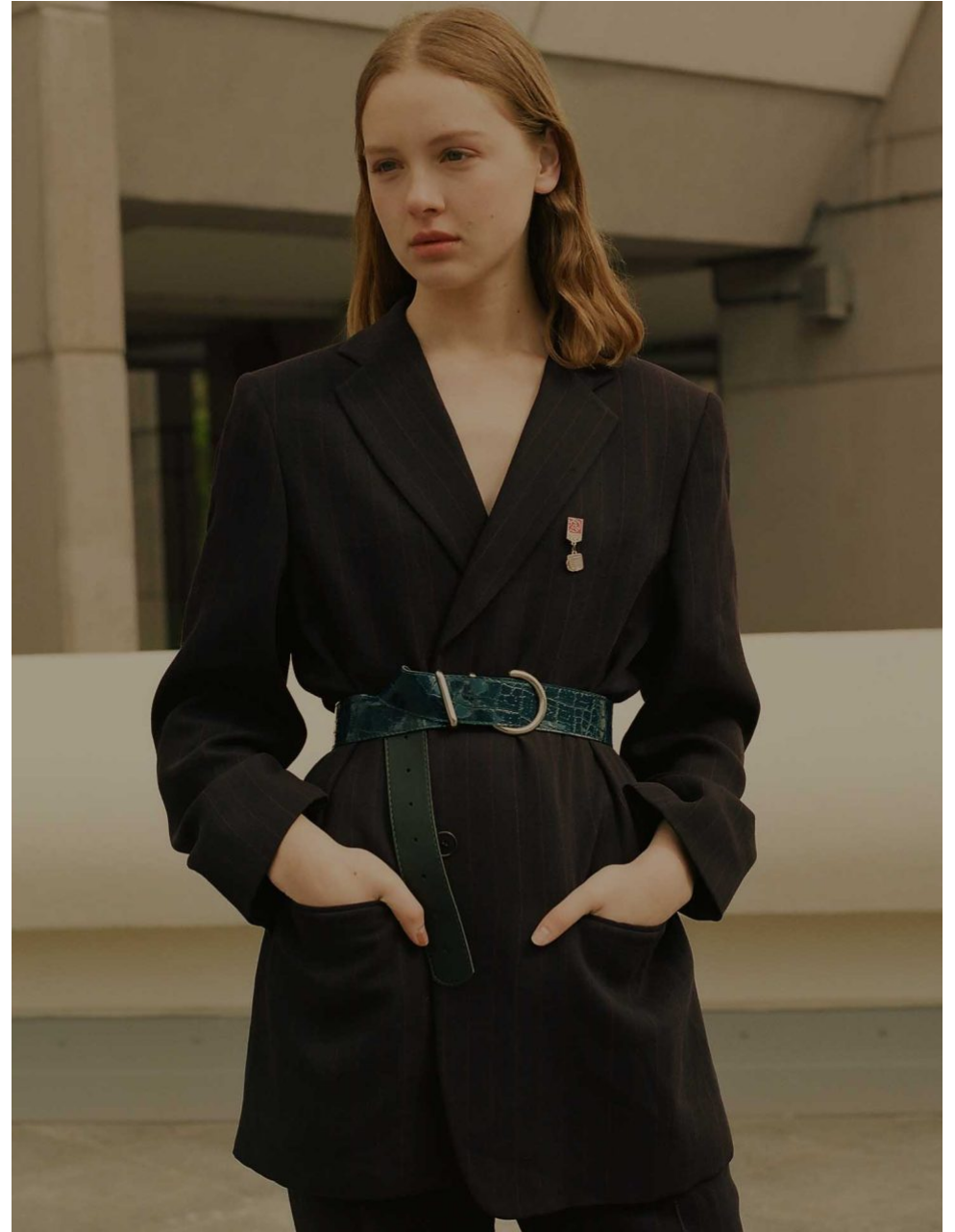
# THE HIVE

---



# THE HIVE

---



# THE HIVE



# THE HIVE

---



# THE HIVE

---



# THE HIVE

Румяна Dual-Intensity, оттенок Adoration, NA RS COSMETICS  
Помада Naked2, URBAN DECAy

Хлопковый топ,  
PAULA CANOVAS DEL VAS  
Платье из полиэстера,  
ROBERT WUN  
Серьги из оловы,  
TOGA ARCHIVES  
Браслет из лагуни и палладия  
с речным жемчугом  
и кристаллами Swarovski,  
JUSTINE CLENQUET



Монолени, оттенок Baby Jane, румяна  
Dual-Intensity, оттенок Adoration,  
NA RS COSMETICS  
Помада, оттенок Devoted to Chili,  
магровая помада, оттенок Candy Yum  
Yum, M.A.C COSMETICS

Шелковое платье,  
NATALIE B COLEMAN  
Шелковое платье,  
ALESSA NDRA RICH  
Шерстяные туфли,  
PAULA CANOVAS DEL VAS  
Клипсы из хрустала с серьгами,  
ALESSA NDRA RICH



## UNDER COVER



Photographs **Charlie Gates** Styling **Beatriz de Cossio**

*Autumn's coats come in soft fabrics and relaxed styles –  
the catwalk's new faces model our favourite looks*



LOCATION: ELLERRE PALACE, THANKS TO L'AMERICA

# THE HIVE



THIS PAGE, VICTORIA WEARS SHEEPSKIN CAPE, £5,300, MIU MIU AMRITA WEARS POLONECK BODY, £160, WOLFORD, COAT, £6,680, THE ROW SASS WEARS SHEARLING COAT, £4,600, CELINE BY HEDI SLIMANE, BOOTS, £875, SPORTMAX, SOCKS, STYLIST'S OWN LILOU WEARS POLONECK BODY, AS BEFORE, COAT, £5,845, PRADA OPPOSITE, SASS WEARS SHIRT, £1,380, JACKET, £4,590, LEGGINGS, £550, AND BOOTS, £1,060, ALAÏA

HAIR TAKUYA UCHIYAMA USING BUMBLE AND BUMBLE MAKE-UP VERITY CUMMING USING GLOSSIER NAILS SAFFRON GODDARD AT SAINT LUKE USING TOM FORD BEAUTY MODELS SASS THOMAS AND LILOU LE SERGENT AT THE HIVE MANAGEMENT, AND AMRITA PALAHEY AND VICTORIA CARON AT ELITE MODEL MANAGEMENT



# THE HIVE

FROM LEFT TO RIGHT

FENDI –  
LEATHER COAT  
FENG CHEN WANG –  
ROLLNECK  
LANVIN –  
SHIRT,  
TROUSERS  
GUCCI –  
SNEAKERS

LOUIS VUITTON –  
TURTLENECK,  
SHIRT,  
LEATHER TROUSERS,  
LEATHER SHOES



# TEENAGE LUST

PHOTOGRAPHER: DAVID RICHARDSON, STYLIST: ALICE LEFONS, MODELS: SASS, LINEA, LOUIS

198 CRASH

# THE HIVE

---



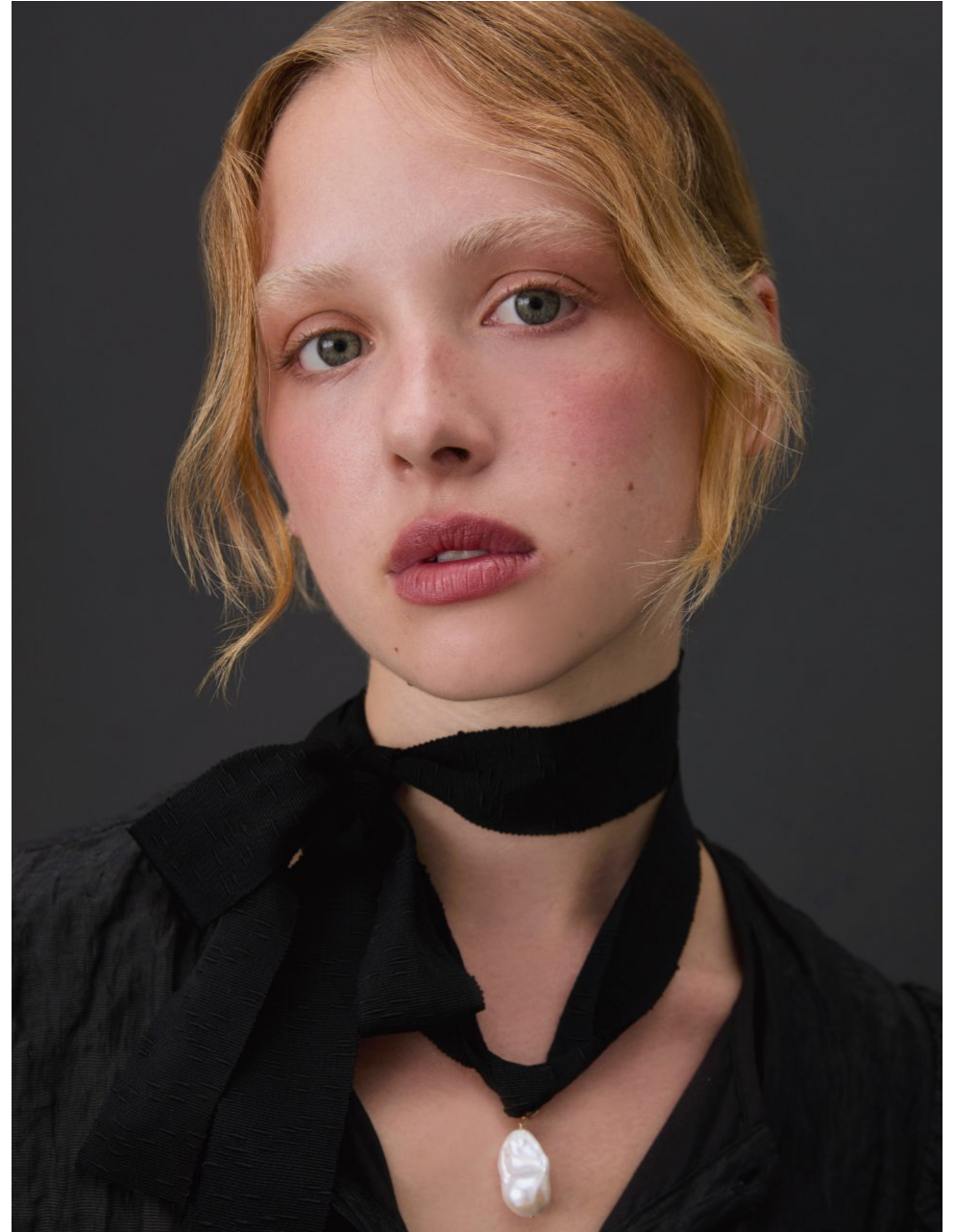
# THE HIVE

---



# THE HIVE

---



# THE HIVE

---

