

# Sashauna Newman

UK

**Height** 5'9 **Bust** 32 **Waist** 24 **Hips** 34  
**Shoes** 6 **Hair** Dark Brown **Eyes** Brown

EU

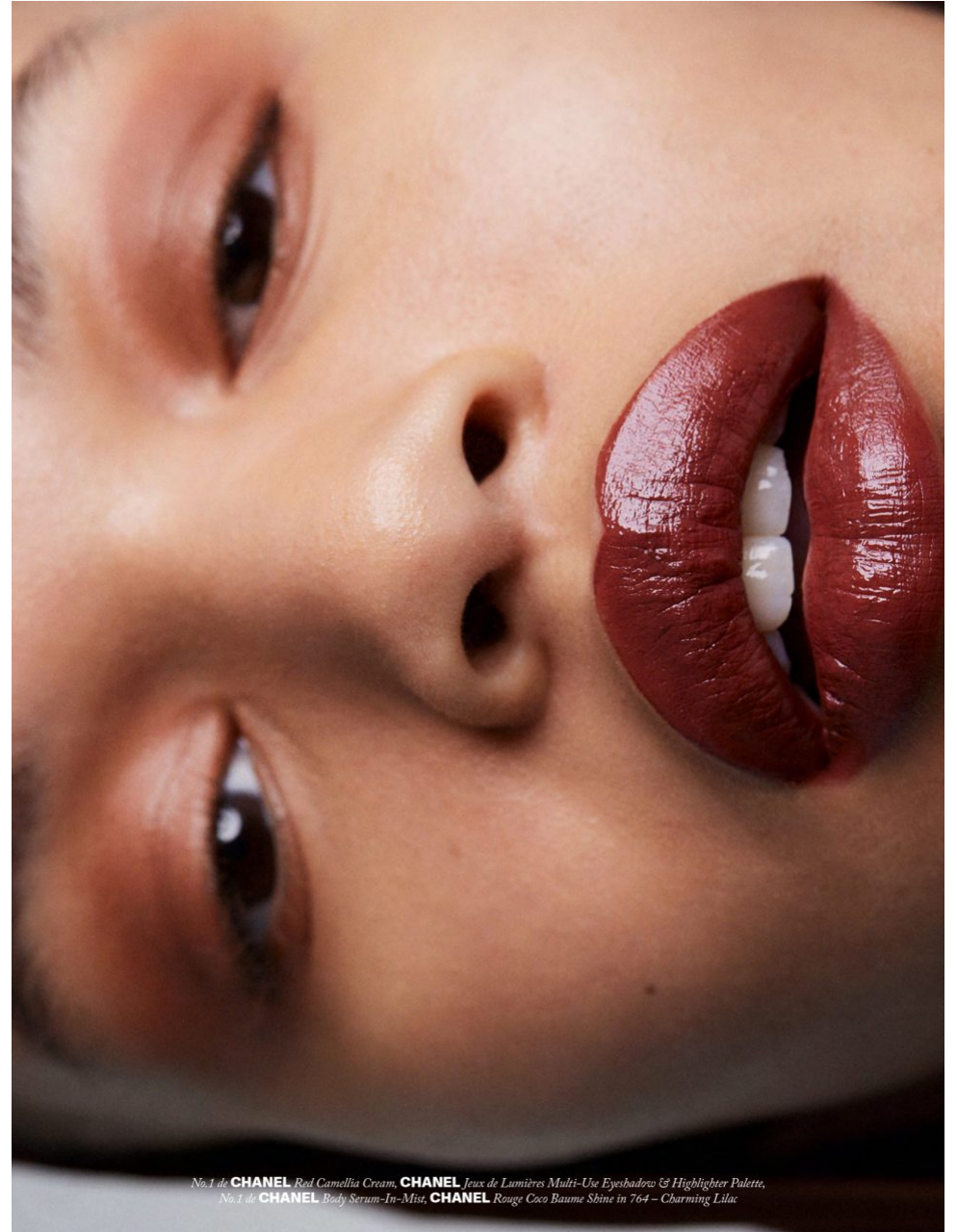
**Height** 1.75 **Bust** 81 **Waist** 61 **Hips** 86  
**Shoes** 39 **Hair** Dark Brown **Eyes** Brown



# THE HIVE



Makeup by Anna Payne at C/O Management using **CHANEL** Spring-Summer 2025  
Makeup Collection & No.1 de **CHANEL** Body Serum-In-Mist



No.1 de **CHANEL** Reel Camellia Cream, **CHANEL** Jeux de Lumières Multi-Use Eyeshadow & Highlighter Palette,  
No.1 de **CHANEL** Body Serum-In-Mist, **CHANEL** Rouge Coco Baume Shine in 764 - Charming Lilac

# THE HIVE

---

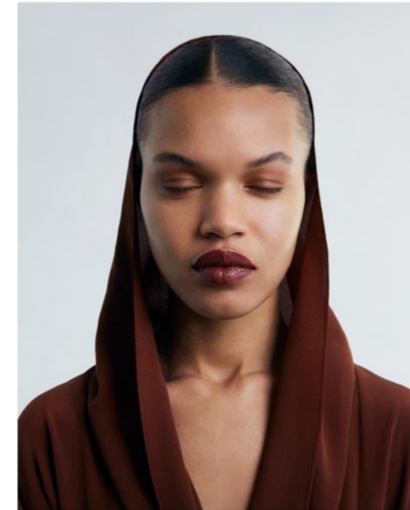
**PETAR PETROV** top: No.1 de **CHANEL** Red Camellia Cream, **CHANEL** Jeux de Lumières Multi-Use Eyeshadow & Highlighter Palette, No.1 de **CHANEL** Body Serum-In-Mist, **CHANEL** Rouge Coco Baume Shine in 764 - Charming Lilac

Page **47**

Photographed by  
**LOTTE THOR**

Styled by  
**ELISA SCHENKE**

Beauty by  
**ANNA PAYNE**

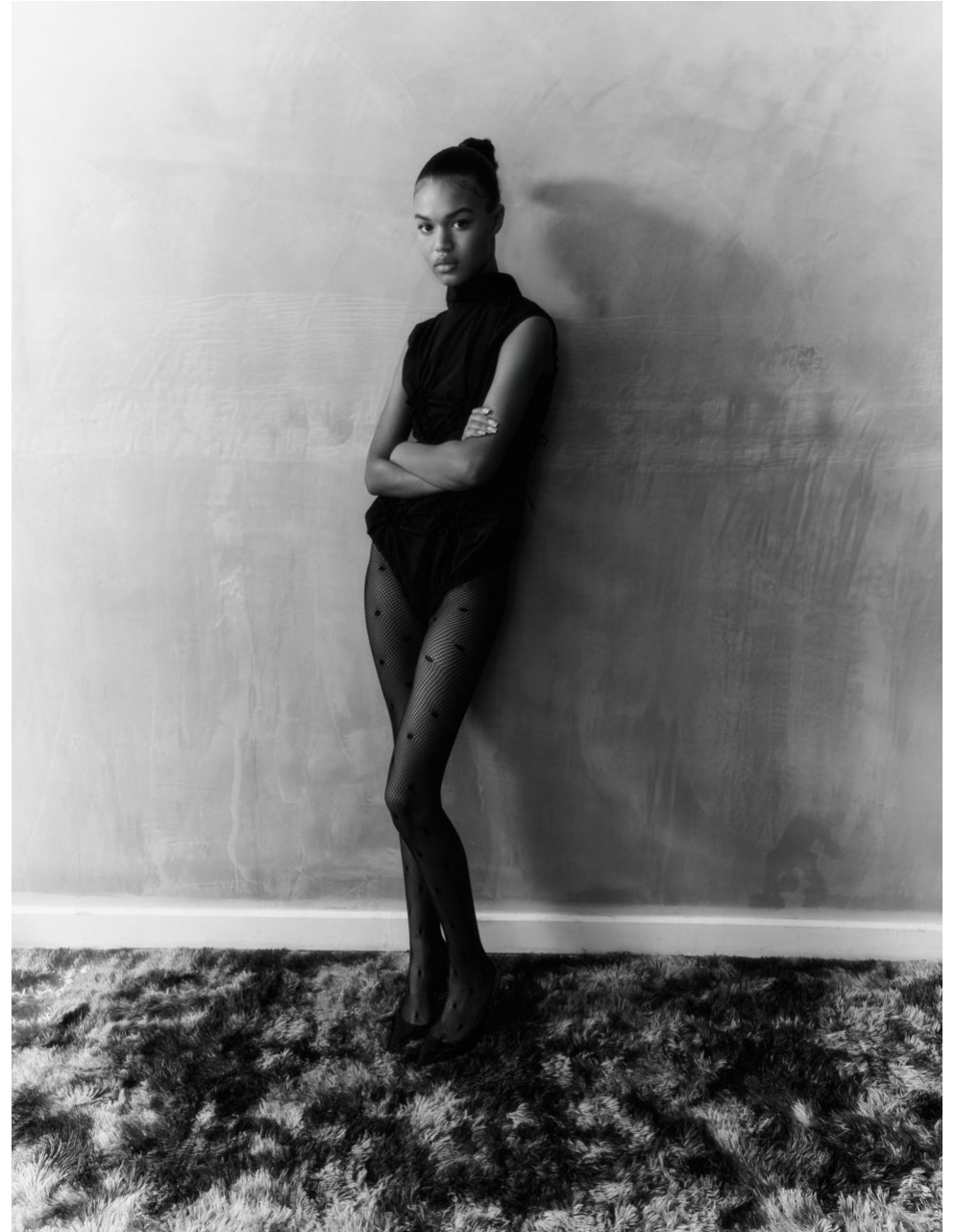


# free

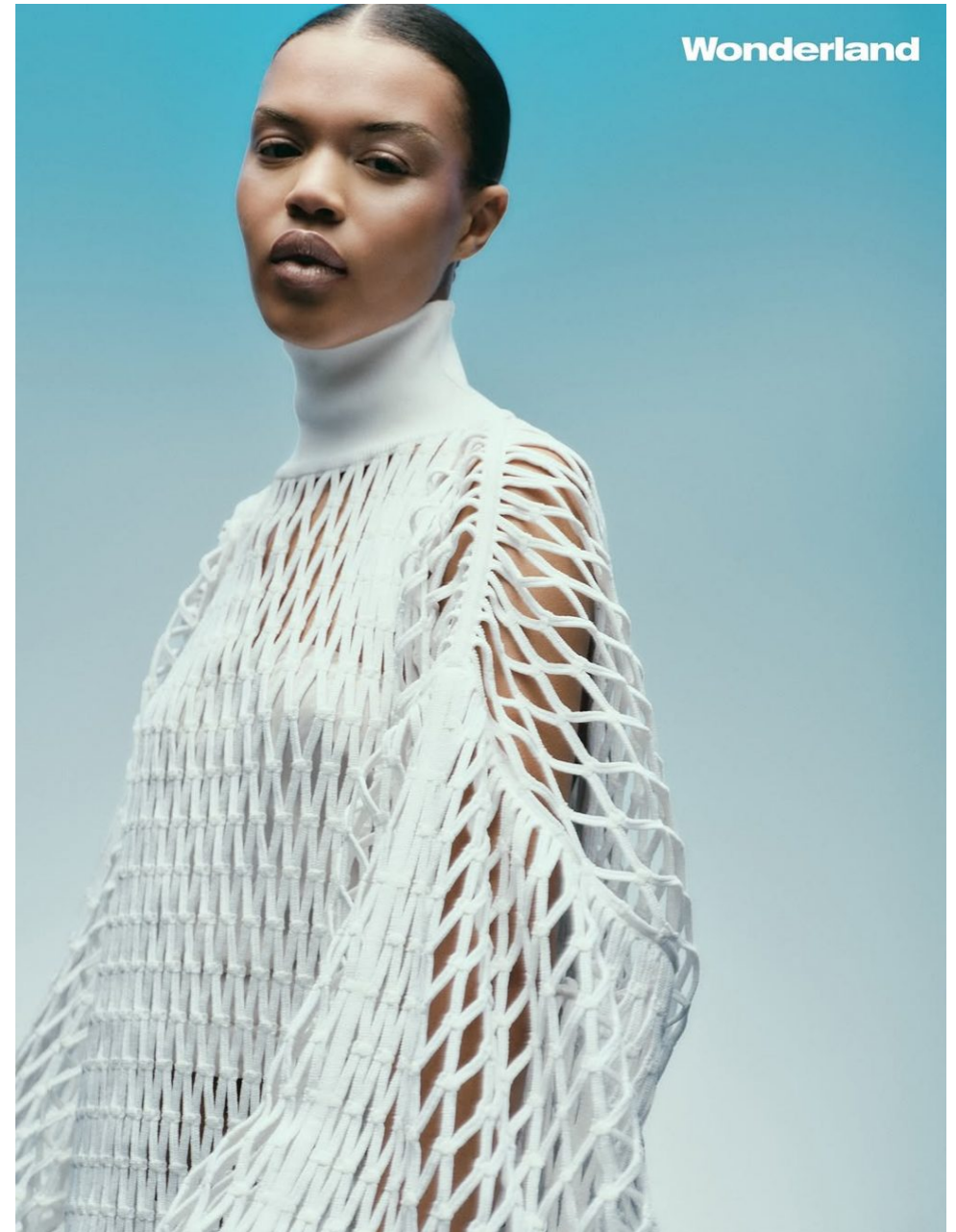
# flowing

# THE HIVE

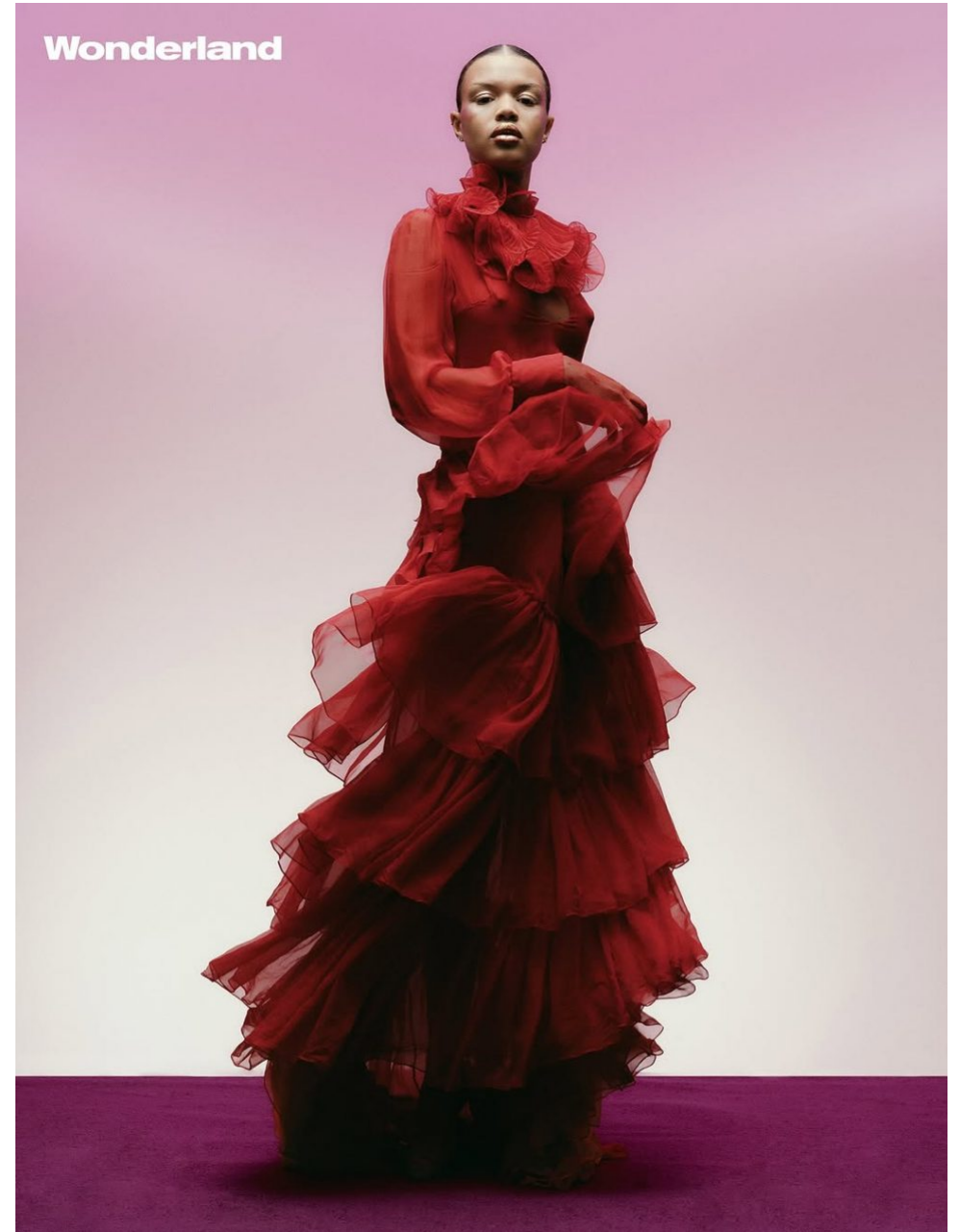
---



# THE HIVE



# THE HIVE



# THE HIVE



# THE HIVE



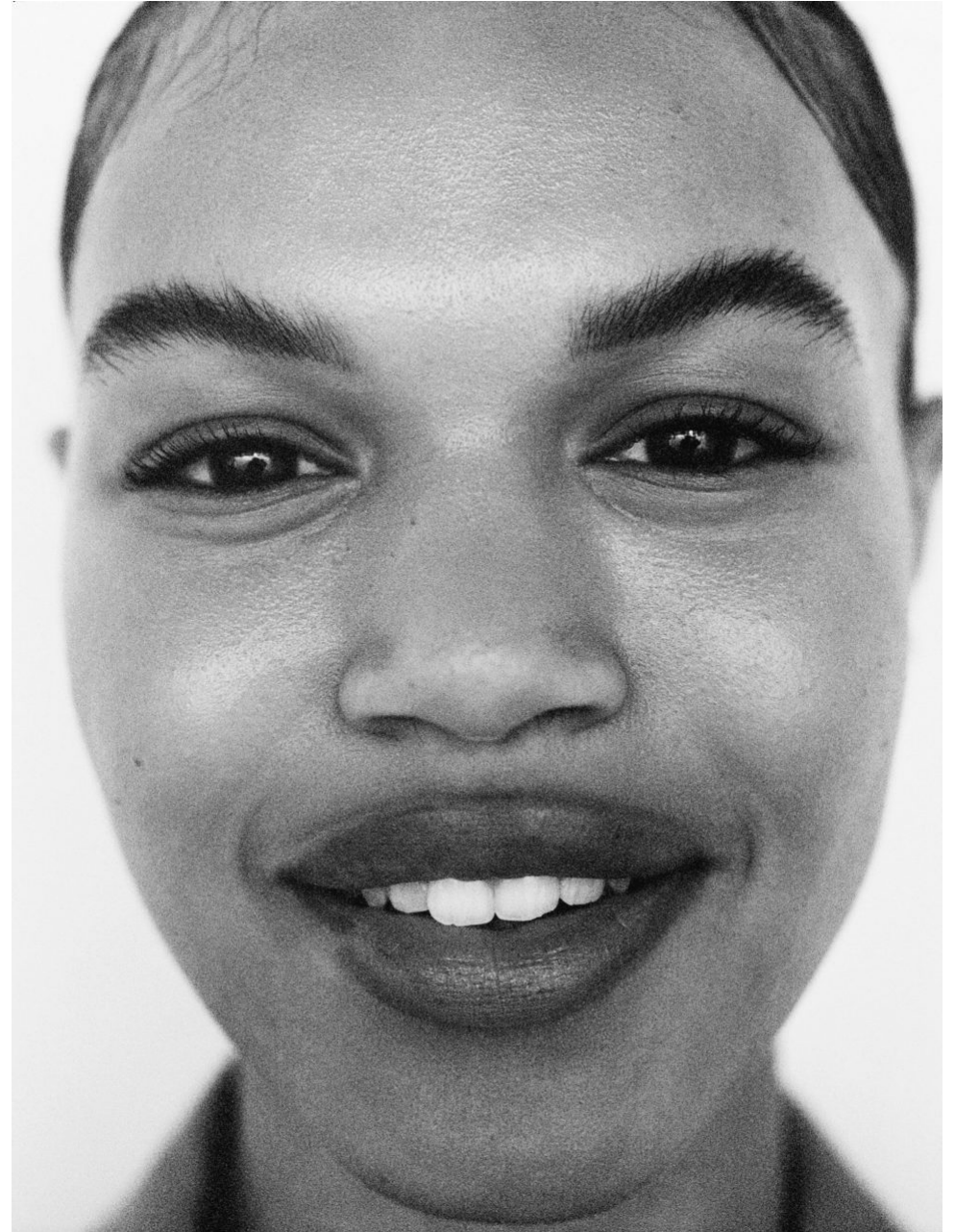
# THE HIVE

---



# THE HIVE

---



# THE HIVE



# THE HIVE



# THE HIVE

---



# THE HIVE

48

HEROINE 16

## Bag It



Jacket, bracelet and earrings all by SAINT LAURENT by ANTHONY VACCARELLO SS22;  
LARGE FINE EVENING POUCH in soft alligator by SAINT LAURENT by ANTHONY VACCARELLO SS22

MARIA SOLOVIEV, hair assistant  
for the shoot  
stylists TOM EASTY and  
LARA WEIDMANN

clip operator EMERIE CAKIR,  
hairdresser  
LORETT, fashion assistant  
ANTON JANKOVSKI and

HAIR: make-up by FROST using  
KANG  
KANG COLLECTION; styling  
director MONIKA DOMARKE

SASHAUNA NEWMAN at  
the shoot  
MODELS: hair PAL BERDARL  
at buyat, artist styling DENSON

models SHARLE AINSBOROLA  
at the shoot  
BONG at PRM AGENCY, ANNA  
DE BRUIJN at VIVA MODELS



Jumpsuit and shoes both by LANVIN SS22; clockwise from top, SPEEDY BANDOLIÈRE 25 DENIM JACQUARD-TEXTILE BAG by LOUIS VUITTON SS22;  
MATELASSÉ LEATHER SHOULDER BAG in black by MIU MIU SS22; MINI CROSSBODY POUCH in teal and black calfskin bag by LANVIN SS22

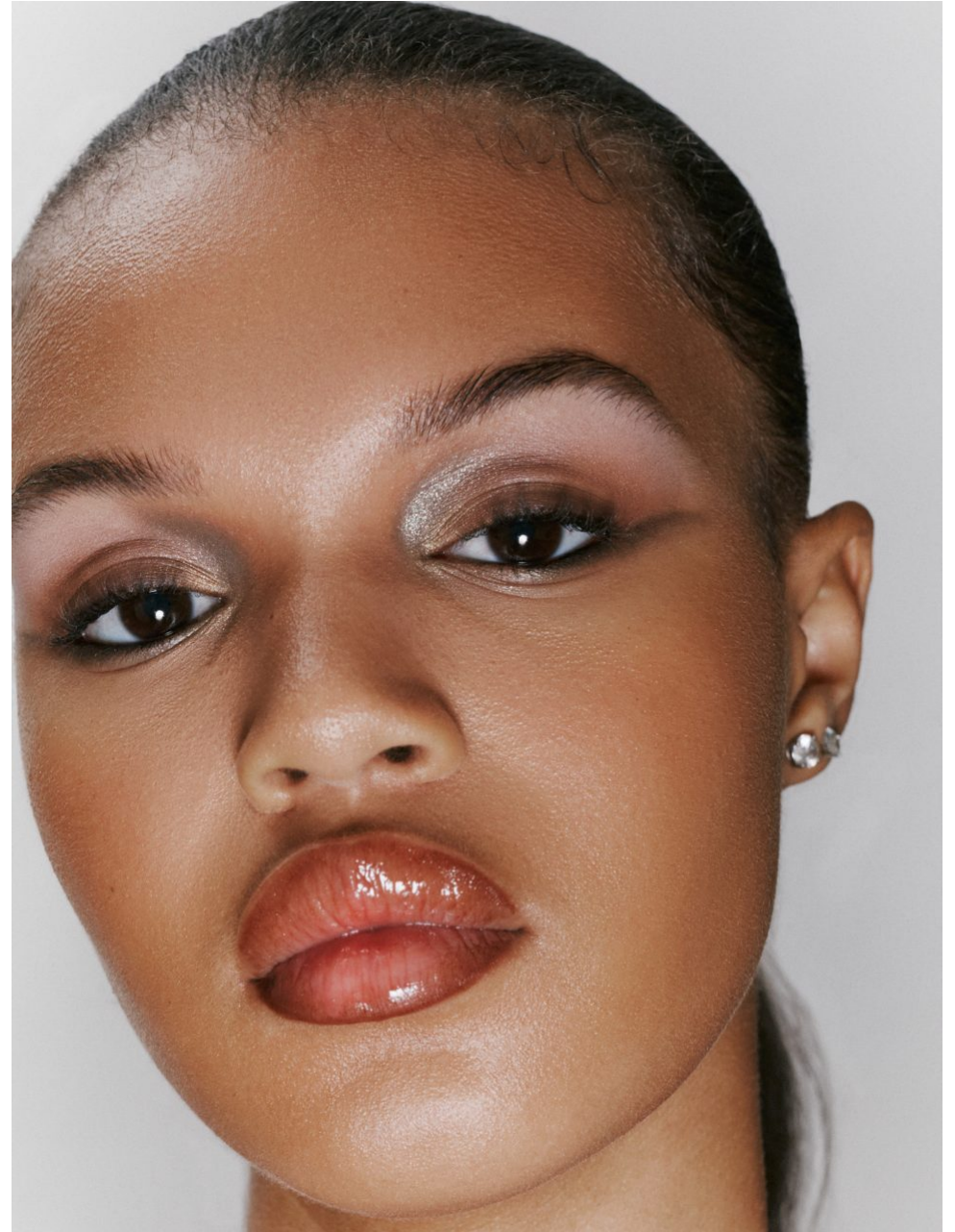
# THE HIVE

---



# THE HIVE

---

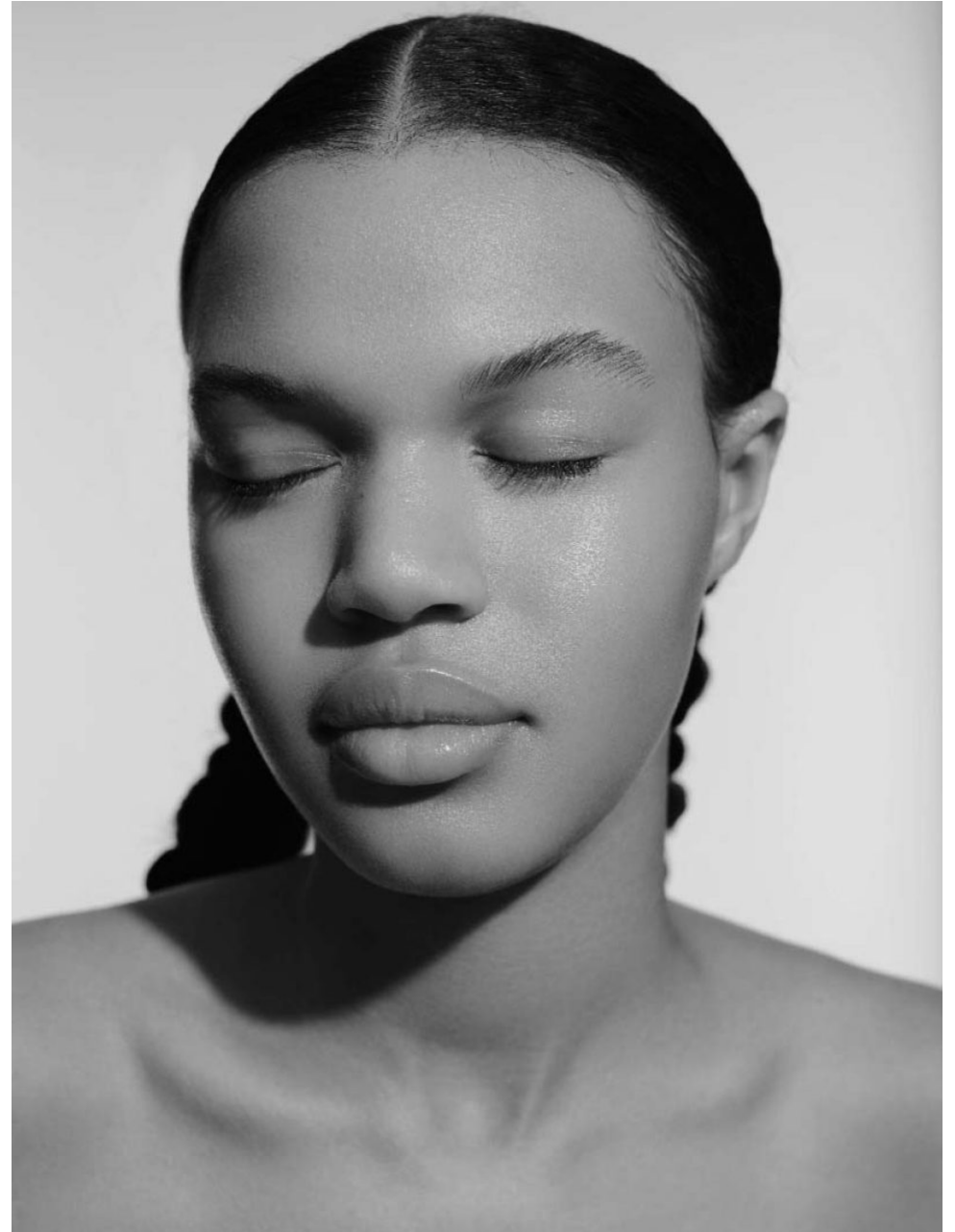


# THE HIVE



# THE HIVE

---



# THE HIVE



# THE HIVE

Photography by Chus & Greg  
Styling by Kieran Kilgallon



## MOMENTO

TANK / 233

232 / TANK / FASHION / AW22



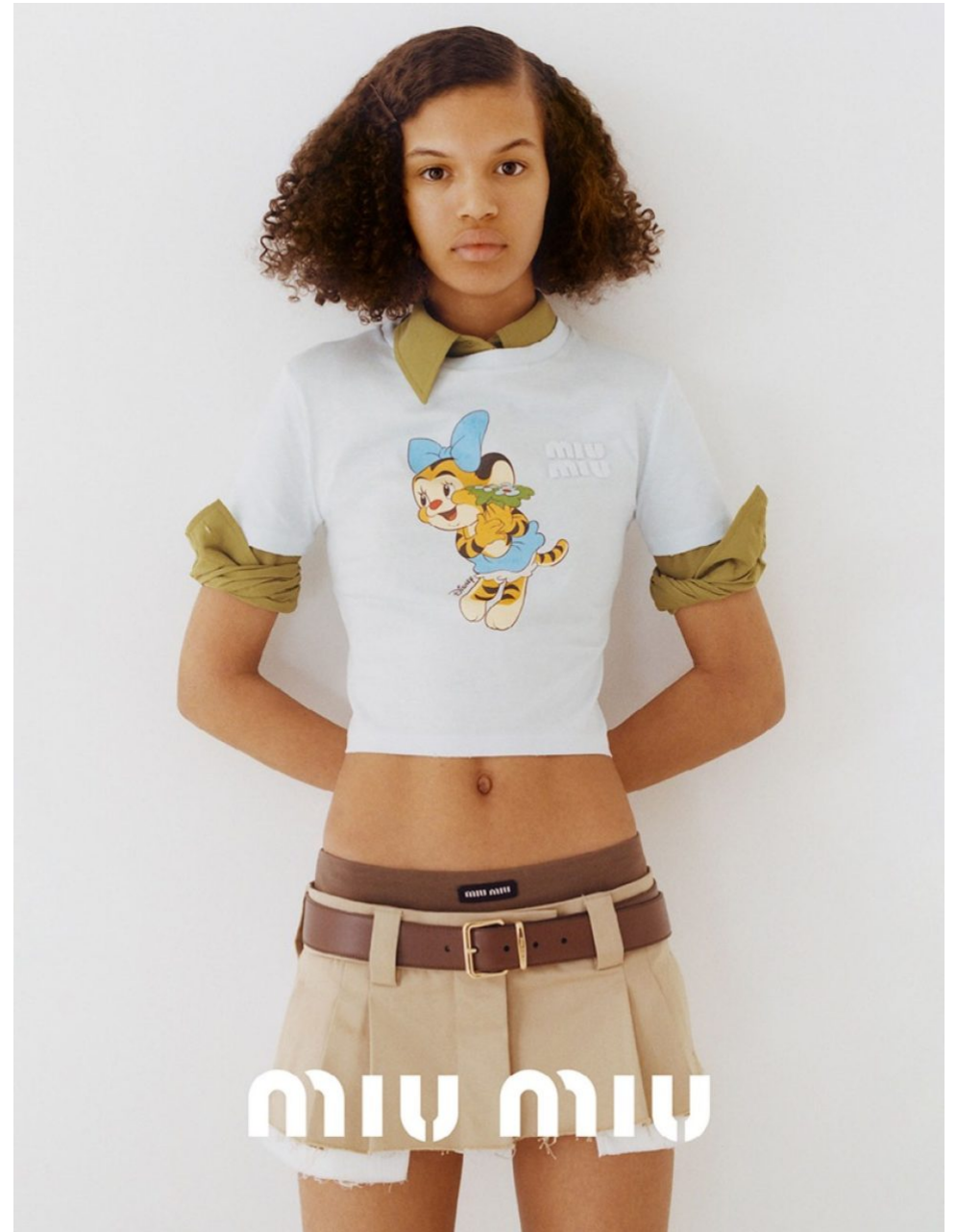
Sashauna wears a jacket and trousers by Y/Project and a custom Pokémon badge top by the stylist, and the model's own earrings (throughout).

Opposite, Sashauna wears a bra by Gucci, a bra by Katya Zelentsova, a jumper (worn underneath) by Chanel, a skirt by Prada, gloves by Acne Studios, and the stylist's own T-shirt and stockings.

# THE HIVE



# THE HIVE



# THE HIVE



# THE HIVE

---



# THE HIVE

---



# THE HIVE



From left: Alice and Sashauna wear cotton tank tops **HELMUT LANG**, canvas and rubber platform trainers **CONVERSE**. Alice wears cotton trousers and leather belt with metal buckle **DSQUARED2**, metal and resin earrings **CHANEL**, brass rings **MM6 MAISON MARGIELA**. Sashauna wears cotton denim shorts and metal and crystal ring **DIOR**, socks stylist's own, brass, aluminium and resin necklace **TAKAHIROMIYASHITATHE SOLOIST**, leather belt with metal buckle **LOUIS VUITTON**

# THE HIVE

---



# THE HIVE



Simone Rocha shirt, Chanel necklace; BEAUTY: N°1 De CHANEL Revitalizing Foundation BD50 & B60, CHANEL Baume Essentiel Sculpting, Le Volume De CHANEL 10 – Noir, CHANEL Rouge Allure L'Extrait 854

# THE HIVE

---



# THE HIVE

---



# THE HIVE

---

