

Polina Sova

UK

Height 5'10 **Bust** 34 **Waist** 25 **Hips** 35.5
Shoes 5 **Hair** Brown **Eyes** Blue

EU

Height 1.78 **Bust** 86 **Waist** 63 **Hips** 90
Shoes 38 **Hair** Brown **Eyes** Blue



THE HIVE



THE HIVE



THE HIVE



THE HIVE



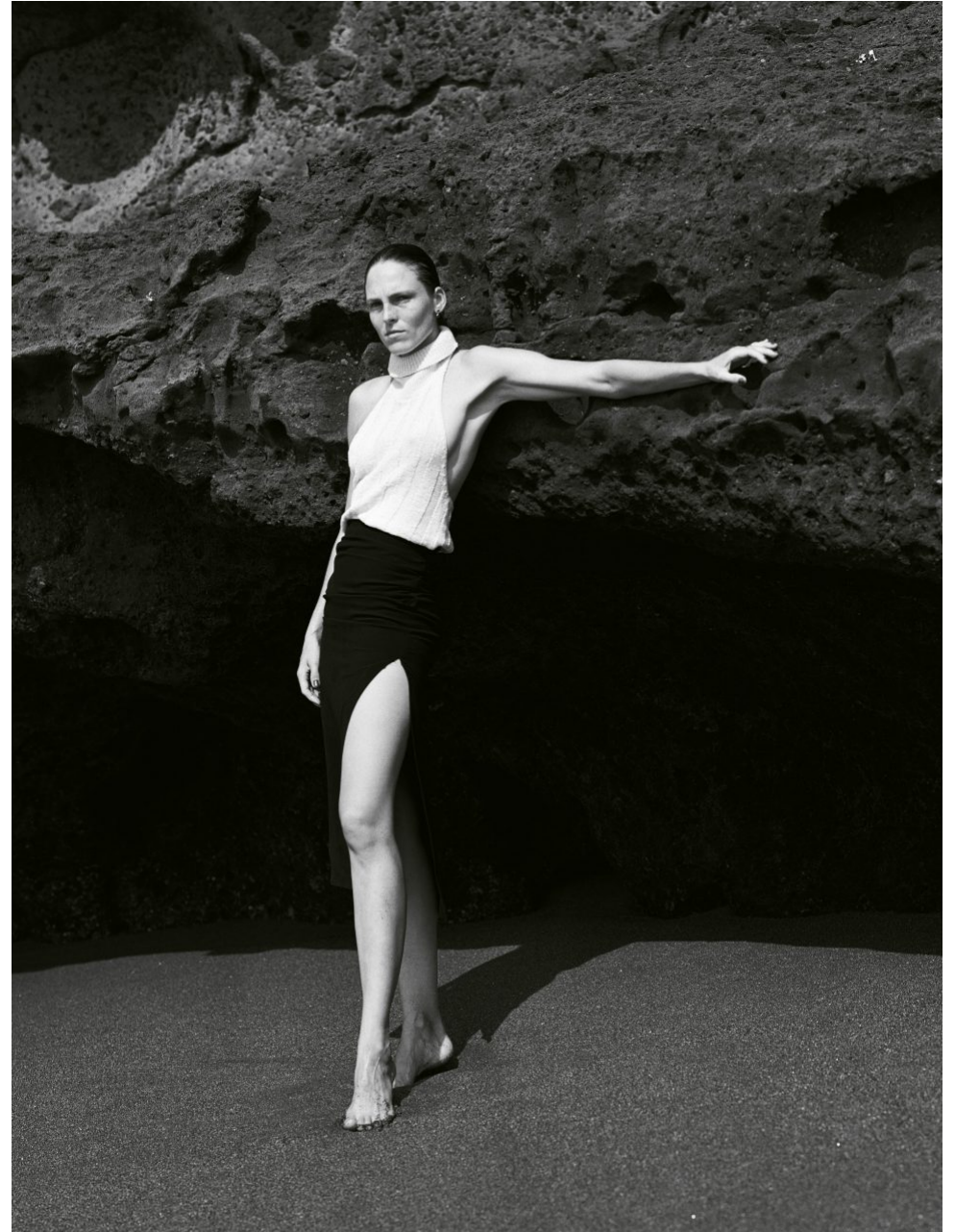
THE HIVE



THE HIVE



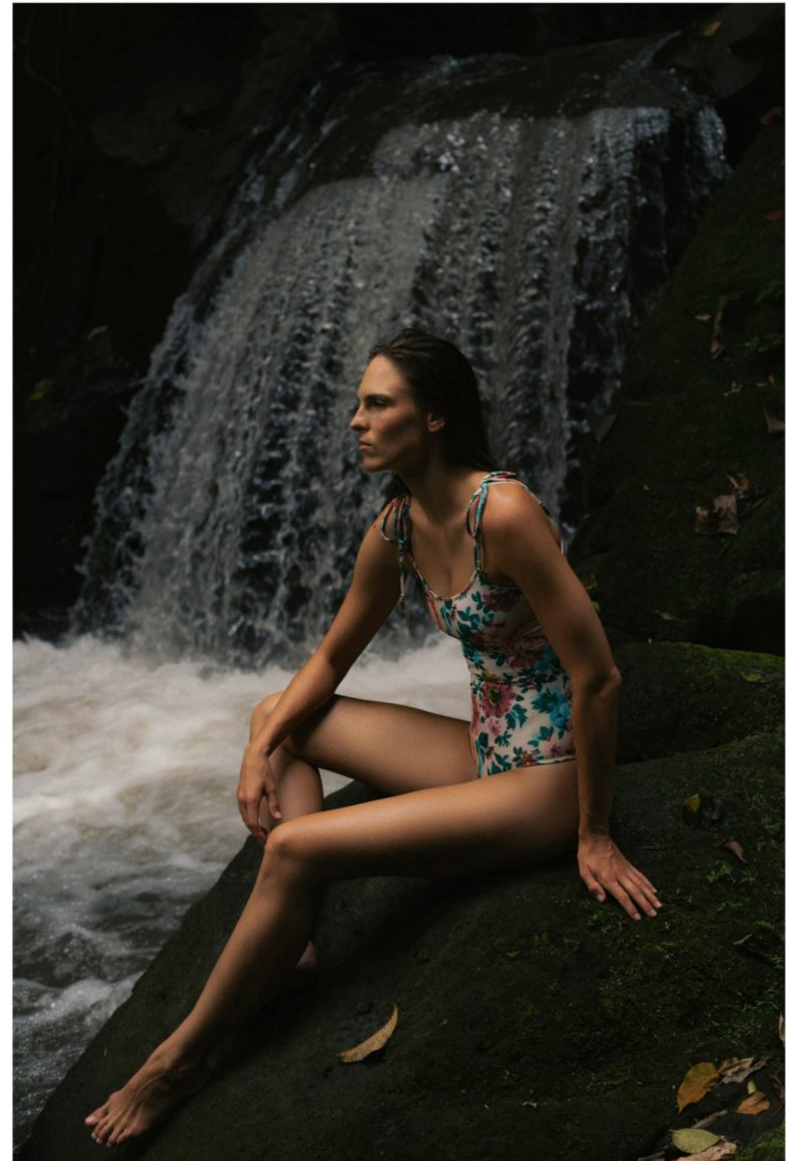
THE HIVE



THE HIVE



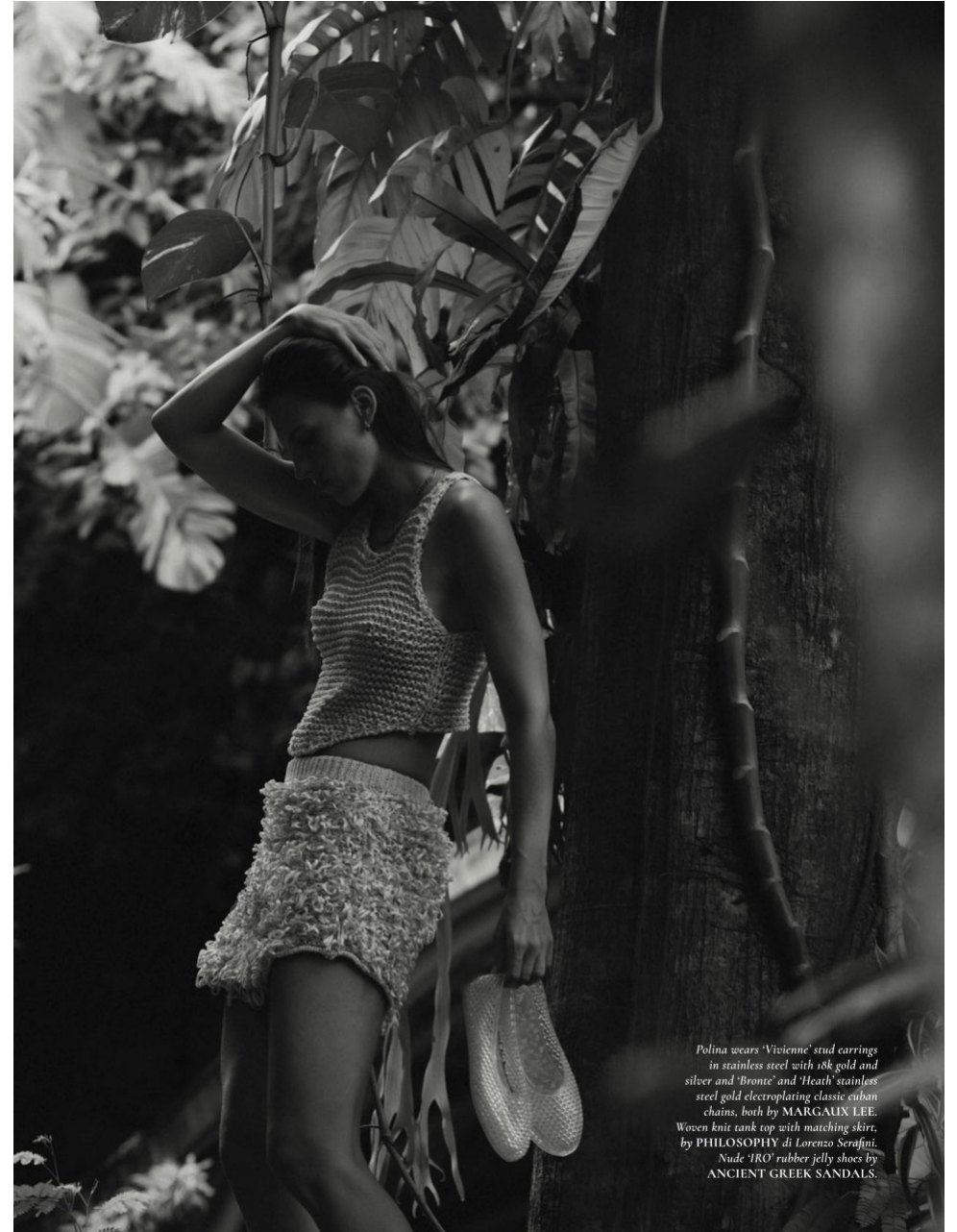
THE HIVE



THE HIVE



THE HIVE



Polina wears 'Vivienne' stud earrings in stainless steel with 18k gold and silver and 'Bronte' and 'Heath' stainless steel gold electroplating classic cuban chains, both by MARGAUX LEE. Woven knit tank top with matching skirt, by PHILOSOPHY di Lorenzo Serafini. Nude 'IRO' rubber jelly shoes by ANCIENT GREEK SANDALS.

THE HIVE



THE HIVE



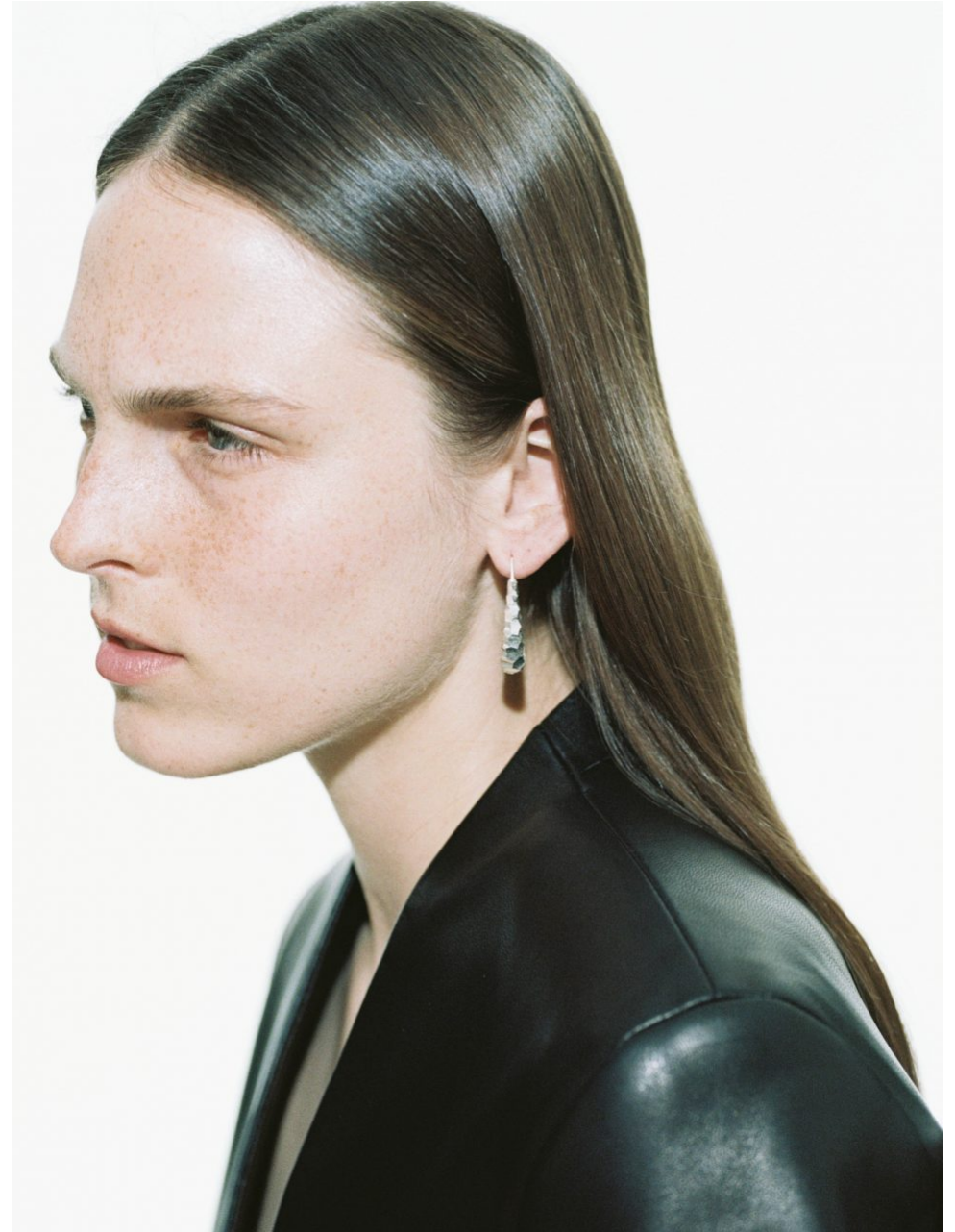
THE HIVE



THE HIVE



THE HIVE



THE HIVE





THE HIVE



THE HIVE



THE HIVE



THE HIVE



THE HIVE



THE HIVE



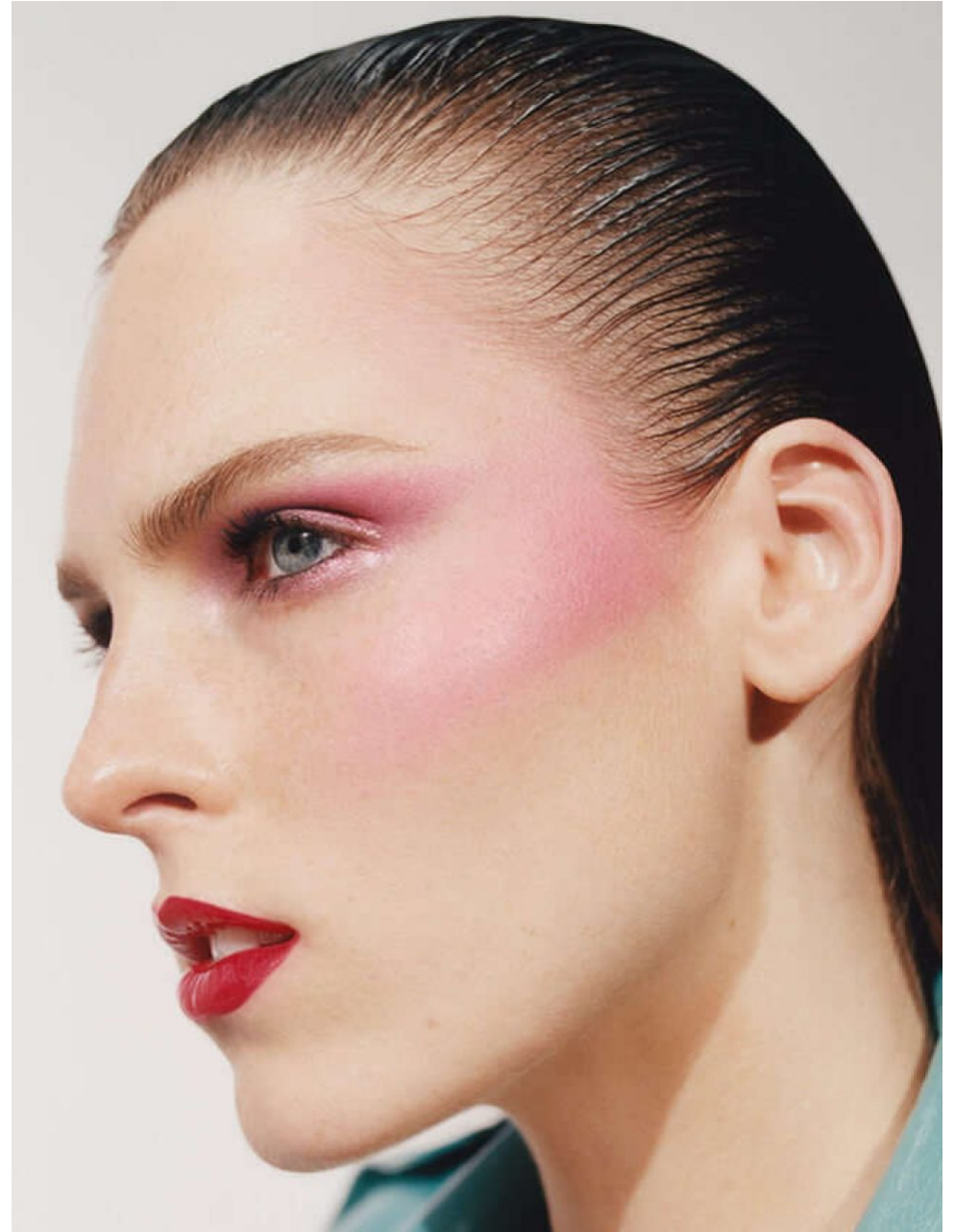
THE HIVE



THE HIVE



THE HIVE



THE HIVE



THE HIVE

