

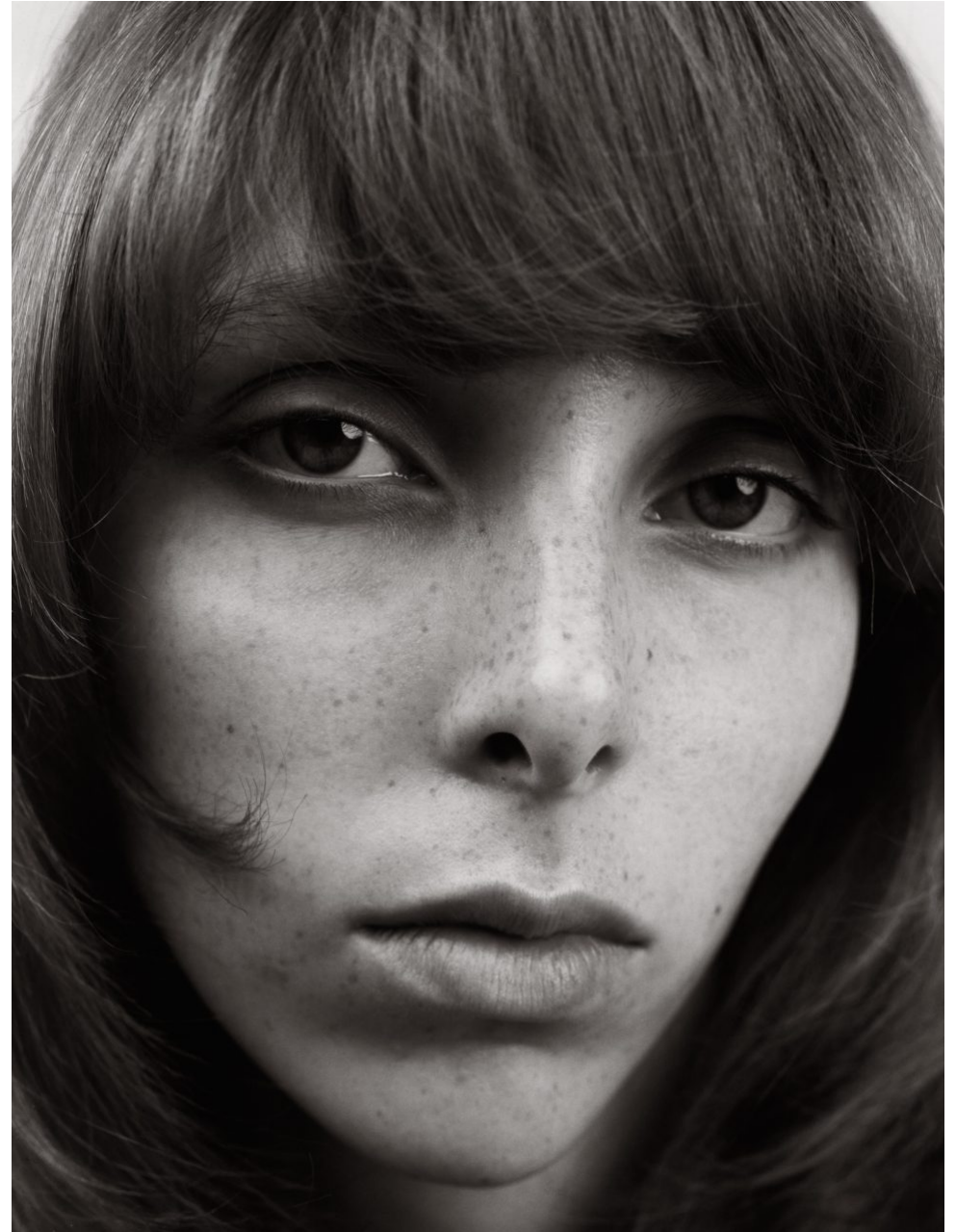
Pien Laureijssen

UK

Height 5'11 **Bust** 32 **Waist** 24 **Hips** 34
Shoes 7 **Hair** Blonde **Eyes** Green

EU

Height 1.80 **Bust** 81 **Waist** 60 **Hips** 86
Shoes 40 **Hair** Blonde **Eyes** Green



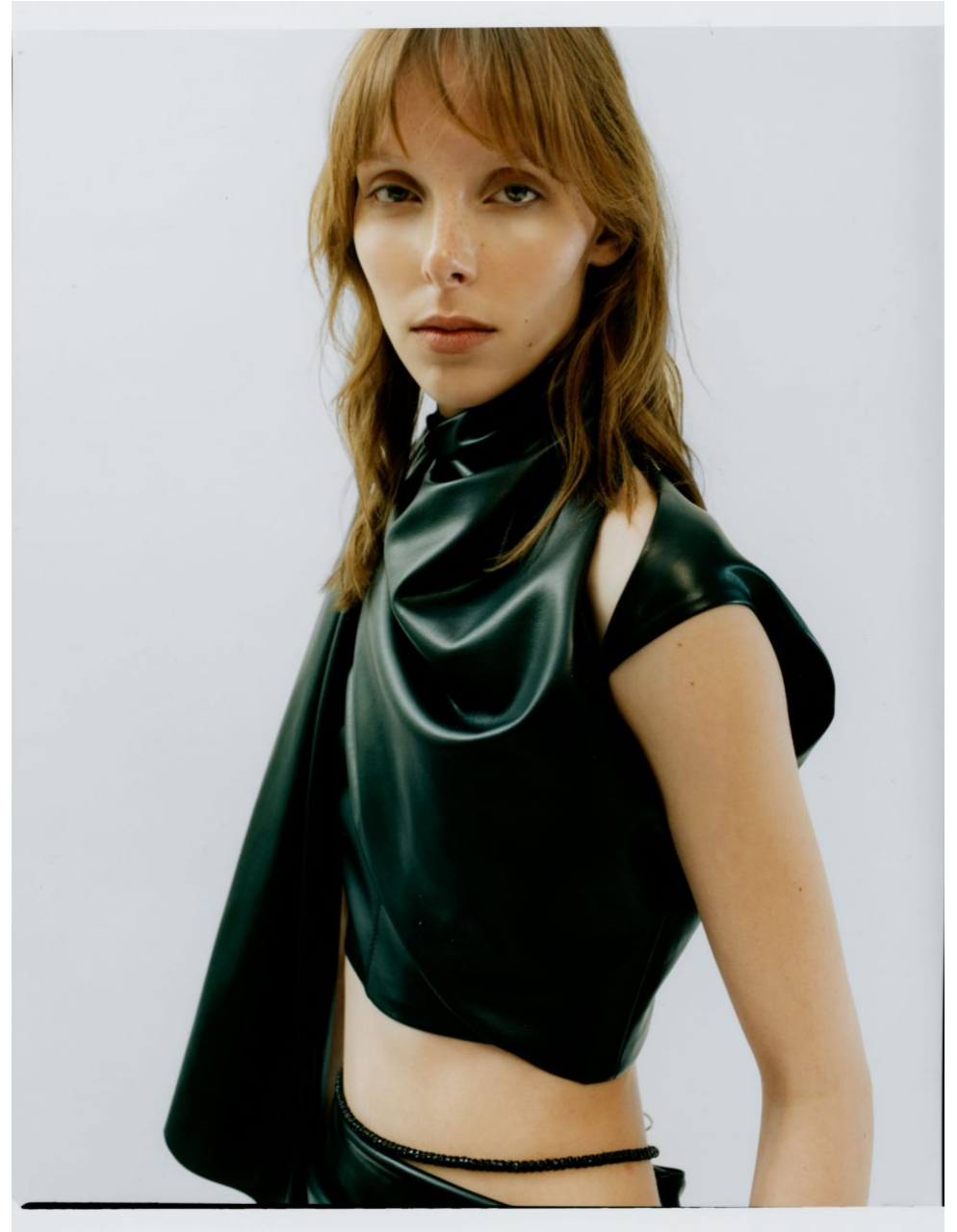
THE HIVE



THE HIVE



THE HIVE



THE HIVE



Jacket, skirt,
scarf and shoes,
PRADA



Jacket and scarf, PRADA
Earring, MONIES

THE HIVE



THE HIVE



Jacket, top and earring.
SAINT LAURENT



Sweater, bra, shorts and boots.
MAX MARA

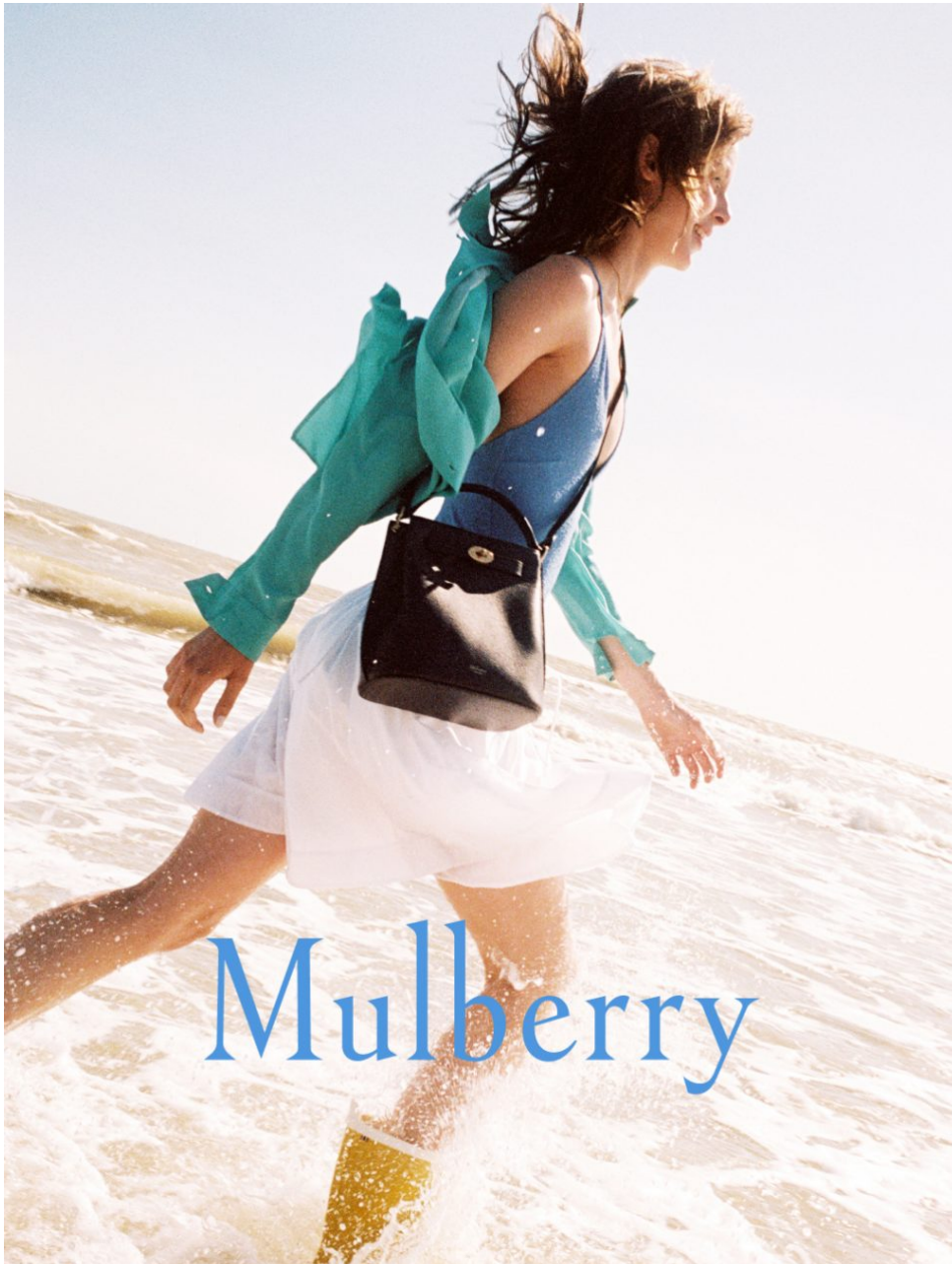
THE HIVE



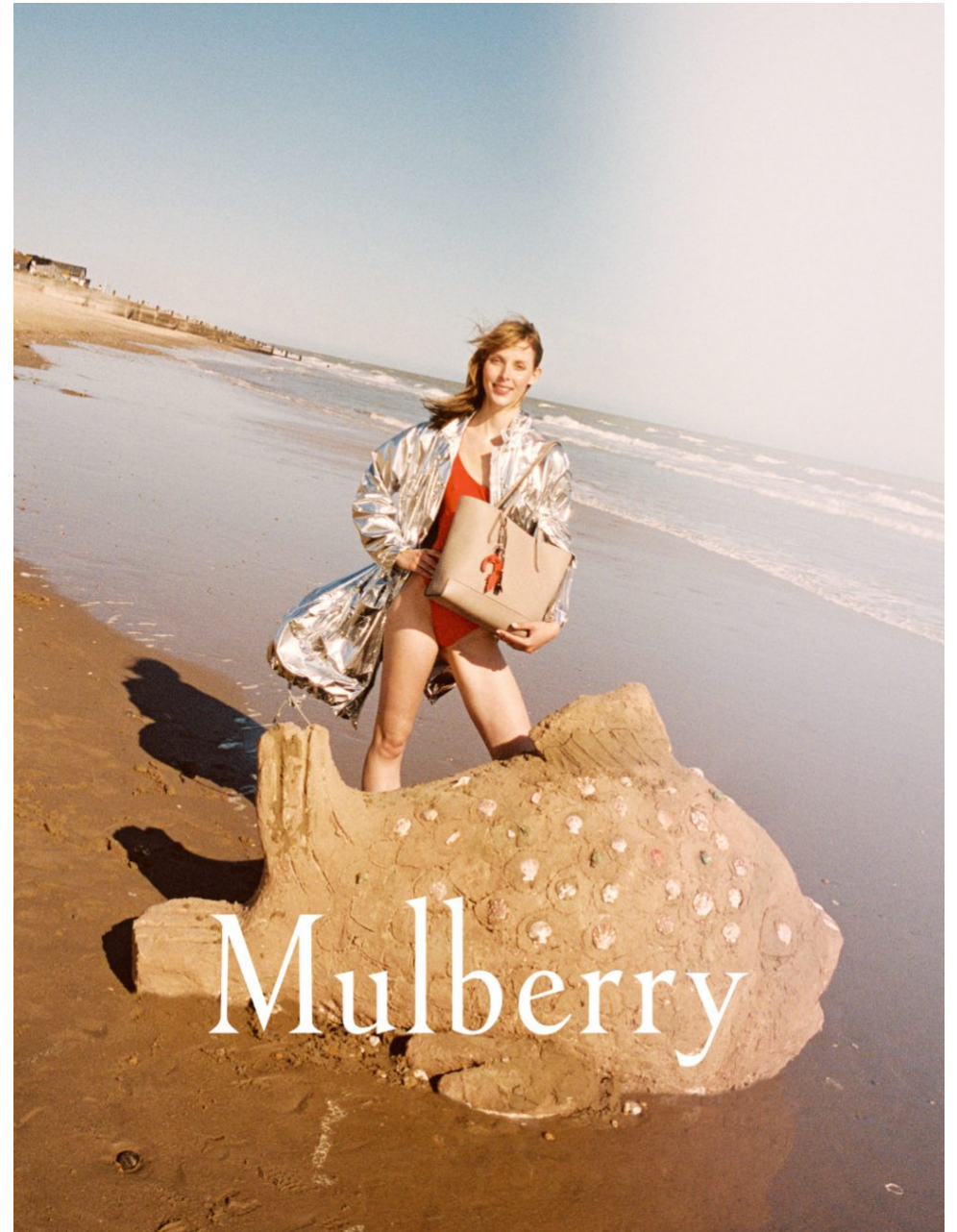
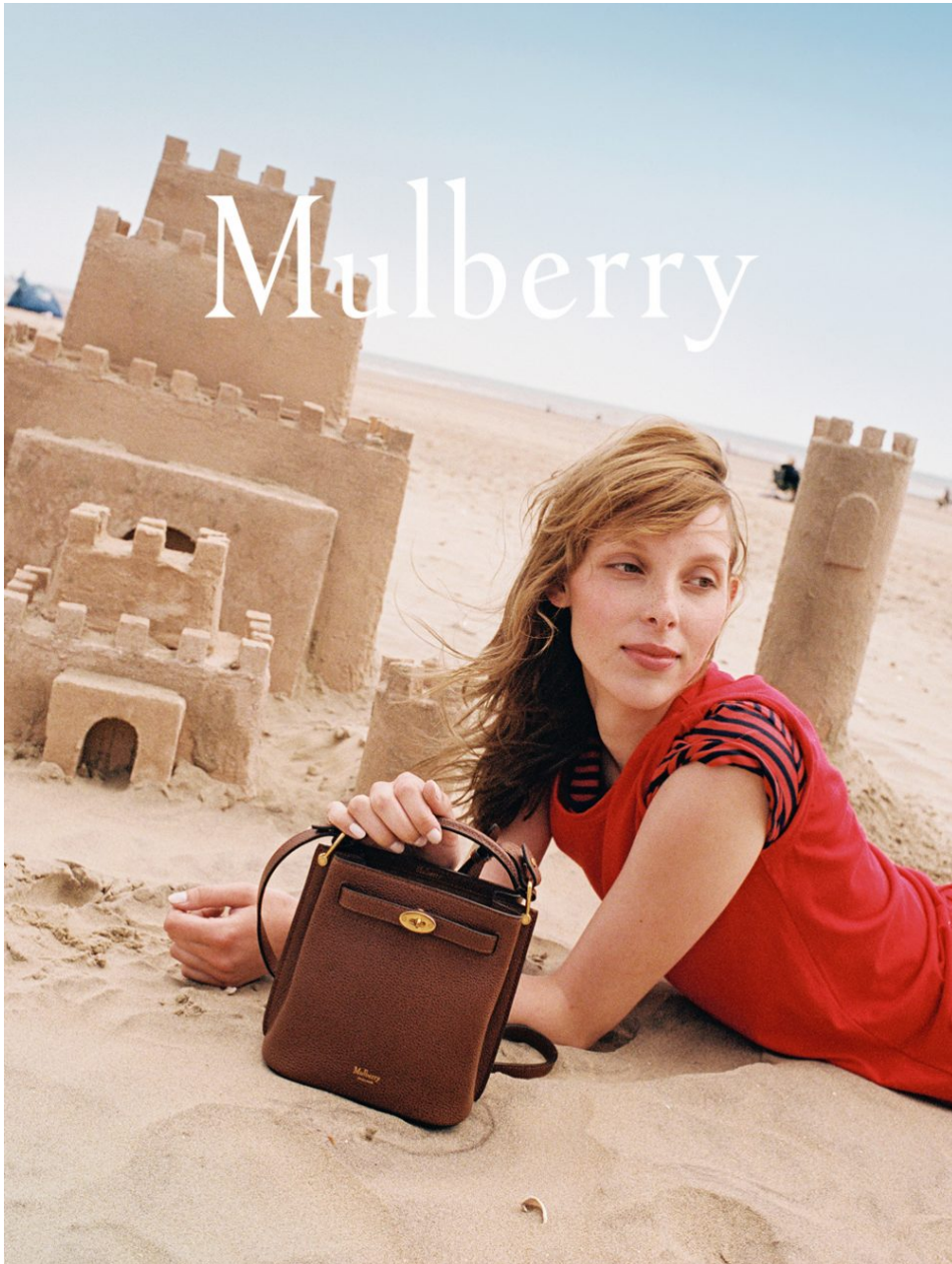
THE HIVE



THE HIVE



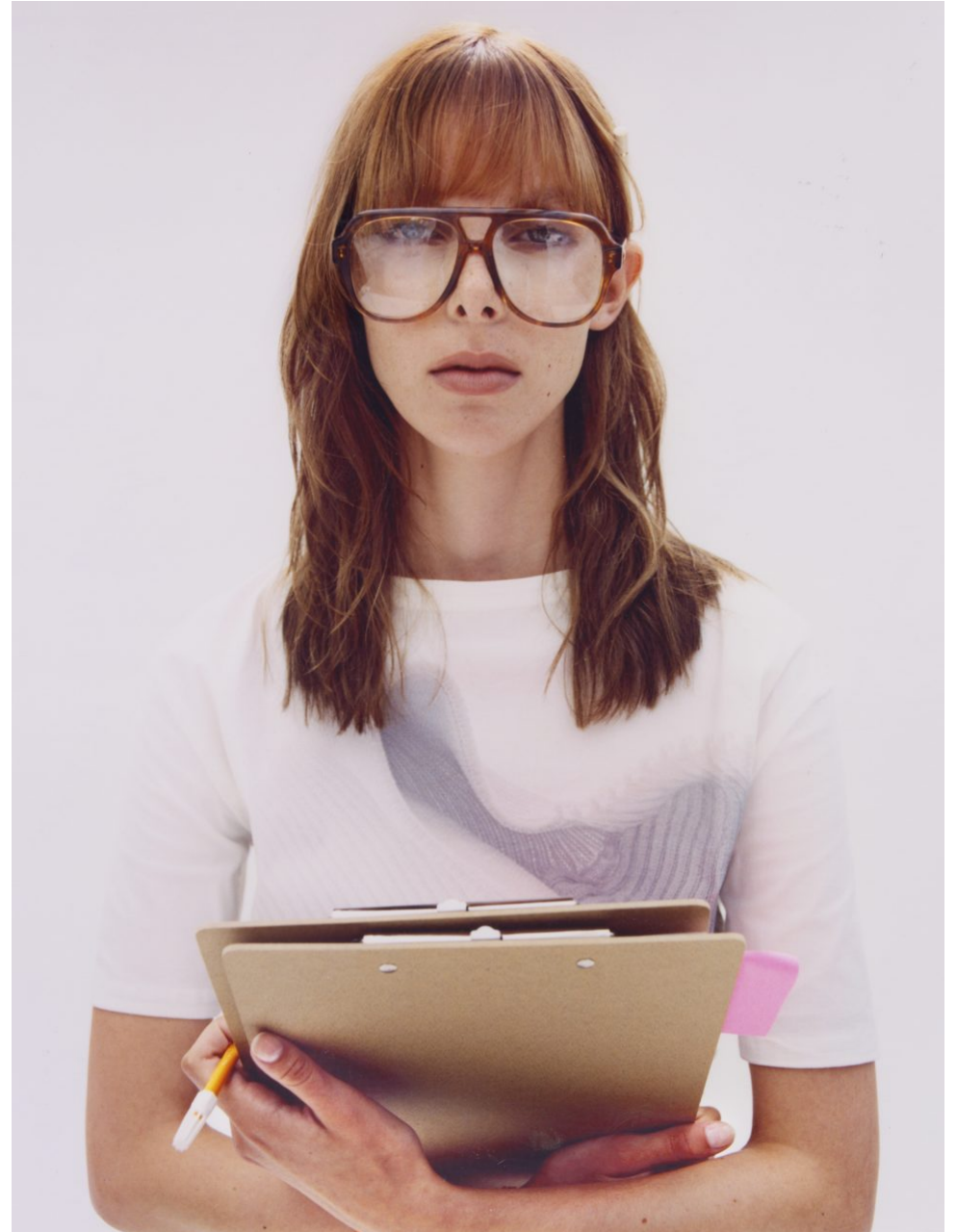
THE HIVE



THE HIVE



THE HIVE



THE HIVE



THE HIVE



THE HIVE



THE HIVE



THE HIVE



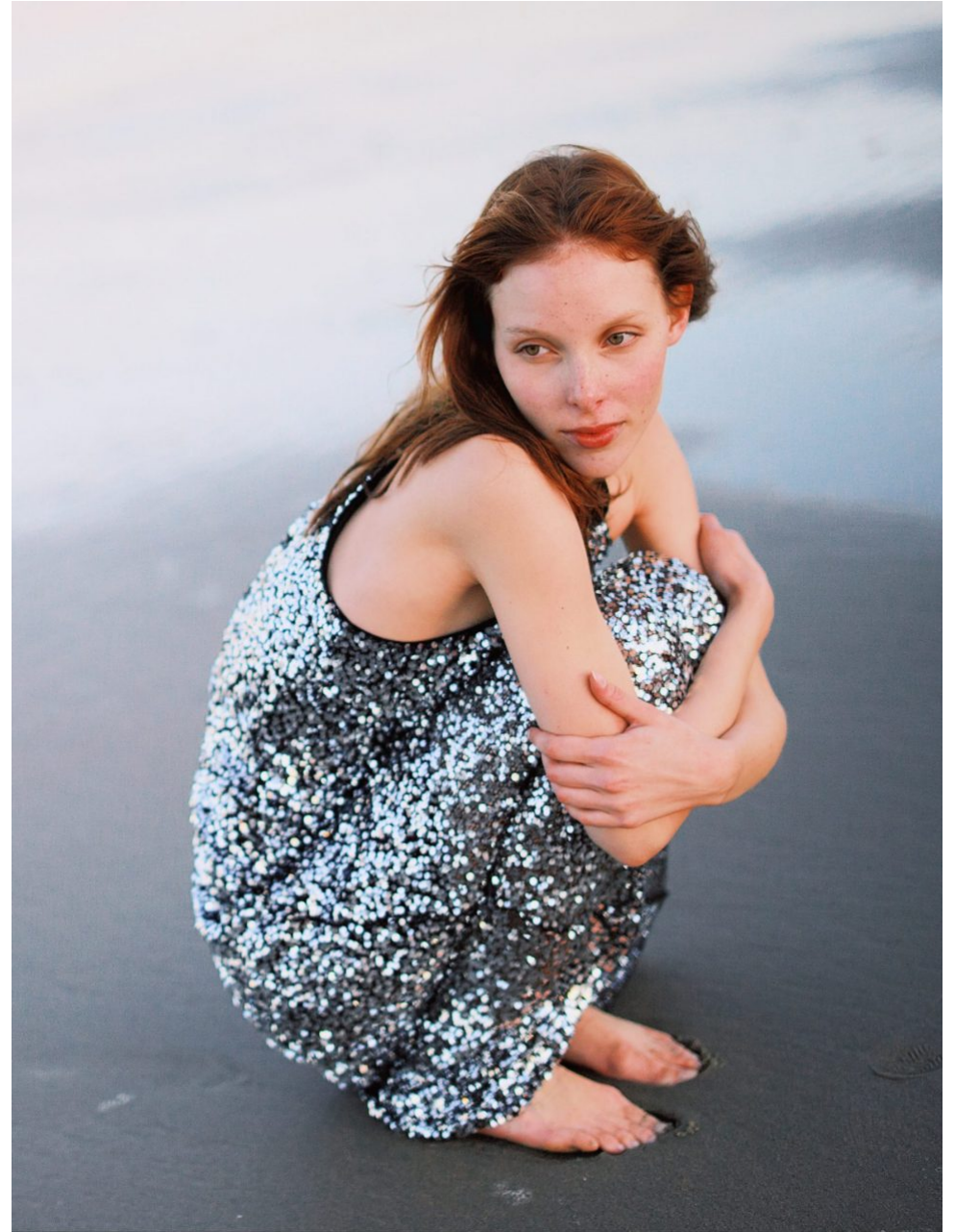
THE HIVE



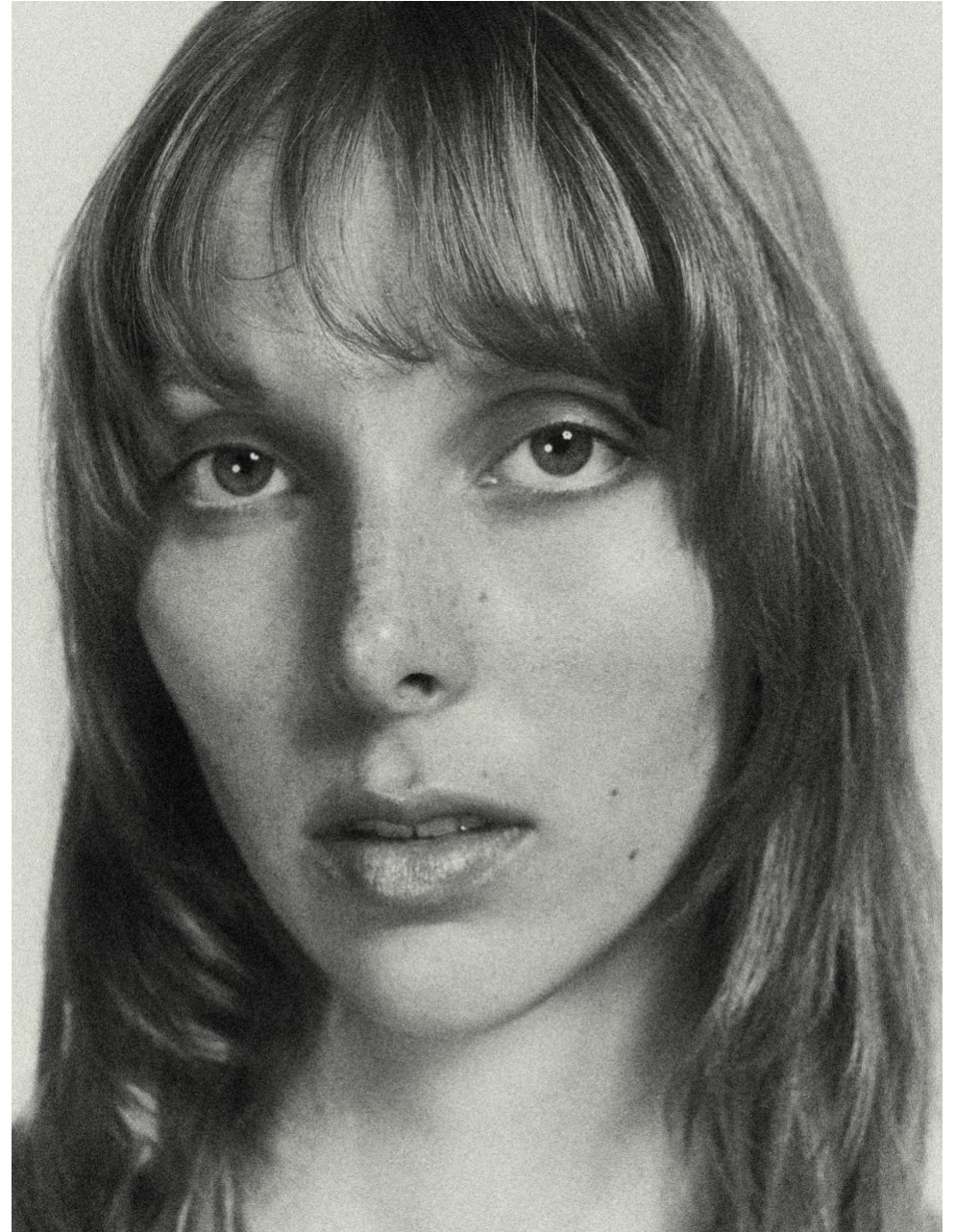
THE HIVE



THE HIVE



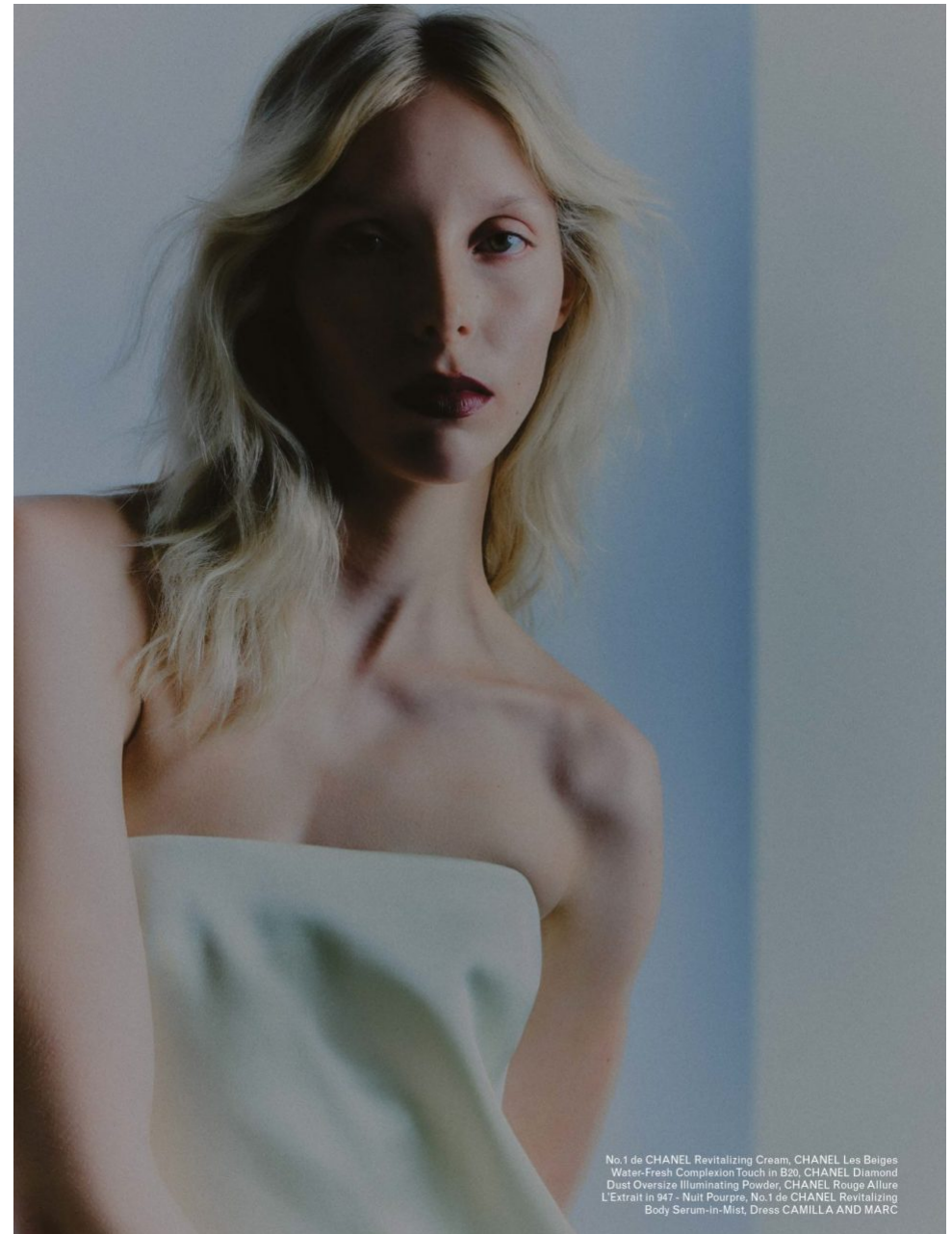
THE HIVE



THE HIVE



THE HIVE



THE HIVE



All make-up by Kim Brown using CHANEL Holiday 2024 Winter Tale Make-up Collection and No.1 de CHANEL Body Serum-in-Mist

No.1 de CHANEL Revitalizing Cream, No.1 de CHANEL Revitalizing Body Serum-in-Mist, CHANEL Diamond Dust Oversize Illuminating Powder, CHANEL Ombre Première Laque in 47 - Milky Way, CHANEL Rouge Allure L'Extrait in 927 - Orange Polaire, Blazer TOVE



No.1 de CHANEL Revitalizing Cream, CHANEL Les Béiges Water-Fresh Complexion Touch in B20, CHANEL Ombre Première Laque in 47 - Milky Way, CHANEL Rouge Allure L'Extrait in 937 - Rouge Spéctral, CHANEL Rouge Allure Laque in 95 - Spell

Stylist LUCY WALKER, Hair CRAIG TAYLOR using HAIR BY SAM MCKNIGHT, Photography assistant LOUIE MIRE, Digi operator DANNY MILLAR, Casting Director PAUL ISAAC, Model PIEN LAUREIJSEN at THE HIVE