

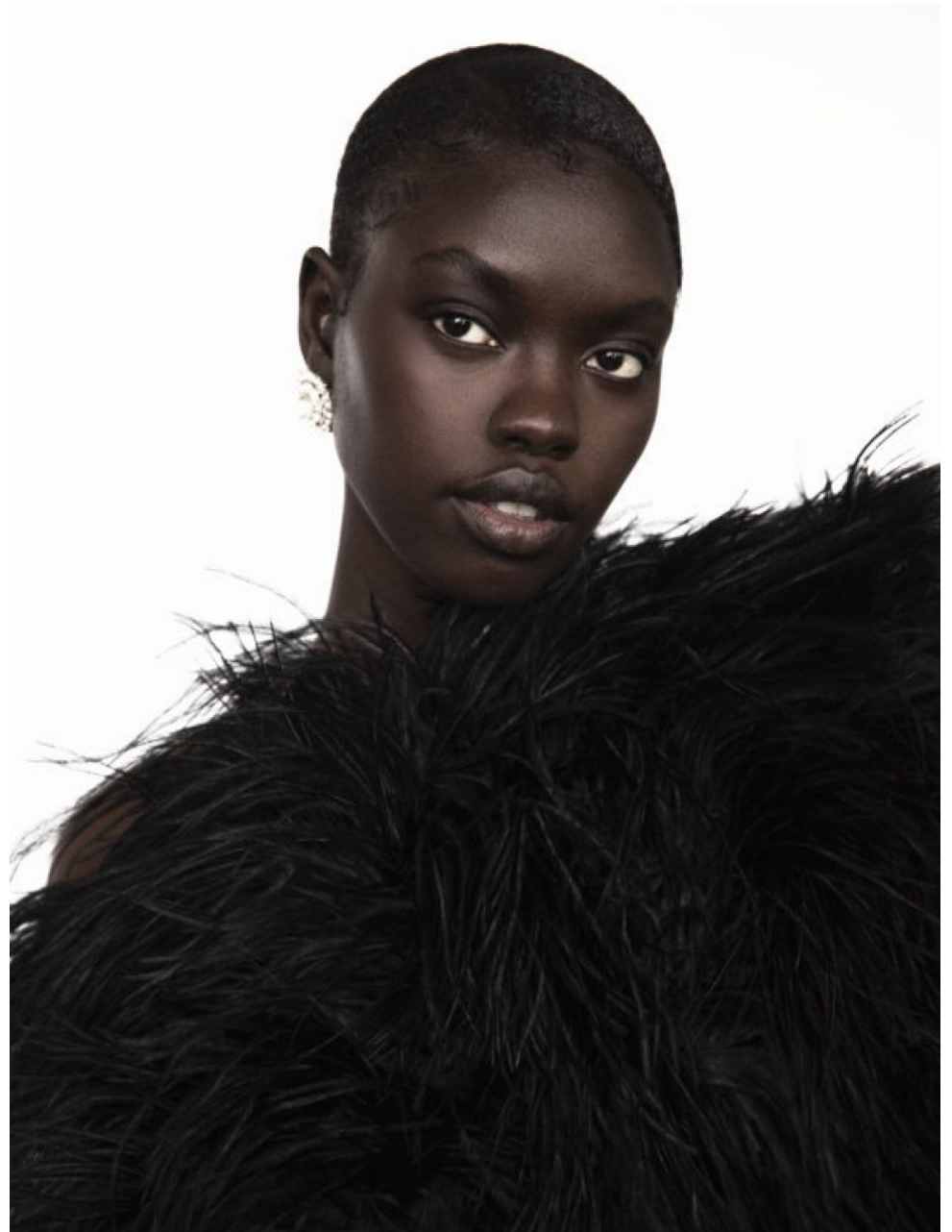
Nyayop Toang

UK

Height 59.5 **Bust** 32 **Waist** 27 **Hips** 38
Shoes 7.5 **Hair** Brown **Eyes** Brown

EU

Height 1.76 **Bust** 81 **Waist** 68 **Hips** 97
Shoes 40.5 **Hair** Brown **Eyes** Brown



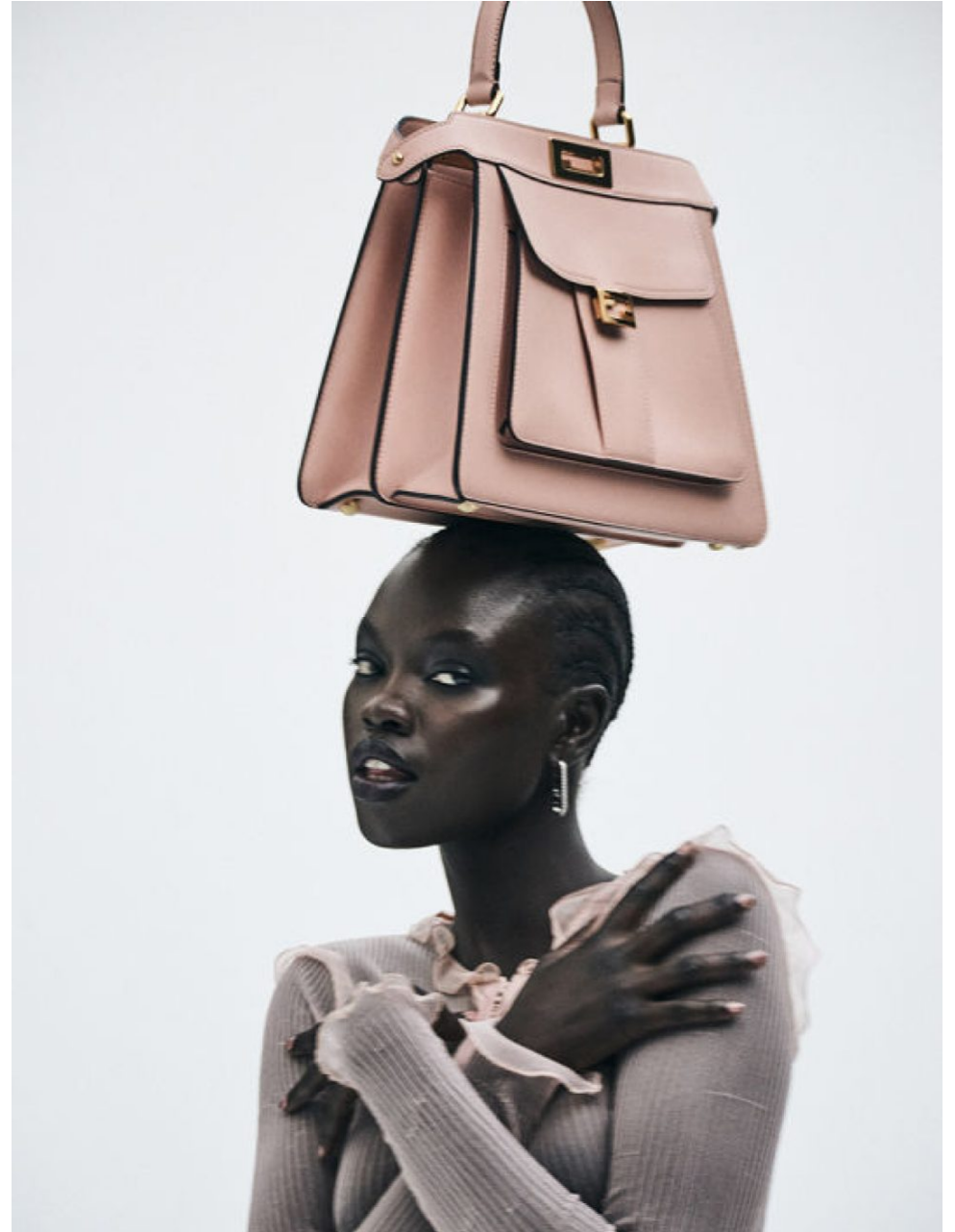
THE HIVE



THE HIVE



THE HIVE



THE HIVE

MODEL



Nyayop wears jacket, bra and shorts by MOSCHINO

Photographer **TIMOTHY ROSADO**
Fashion Editor **CORNELIUS LAFAYETTE**

Hair: **ANAMI LAURETTE** using Verb's Ghost Hairspray and Oil,
Kryolan Body Paint and Show Division Edge Control
Make-up: **HIRAKO** using Max Cosmetics
Model: **NYAYOP TOANG** at Muse Models NYC and ARTA GEE
at APM Models NY
Photographer's assistant: **ARACELY AROCHO**
Fashion assistant: **CHERRISSE BUTCHER**
Make-up assistant: **EMMA ANDO**

Nyayop wears jacket and trousers by **PROENZA SCHOULER**

Throughout: hats by **ESENSHEL** and **KANGOL**, headpieces
by **J.R. MALPERE**, earrings by **PATRICIA VON MUSULIN**,
shoes by **S.R. STUDIO LA,CA**, trainers by **NIKE AIR**
JORDAN CHICAGO 1 1985 courtesy of **ARTIFACT NY**.



THE HIVE

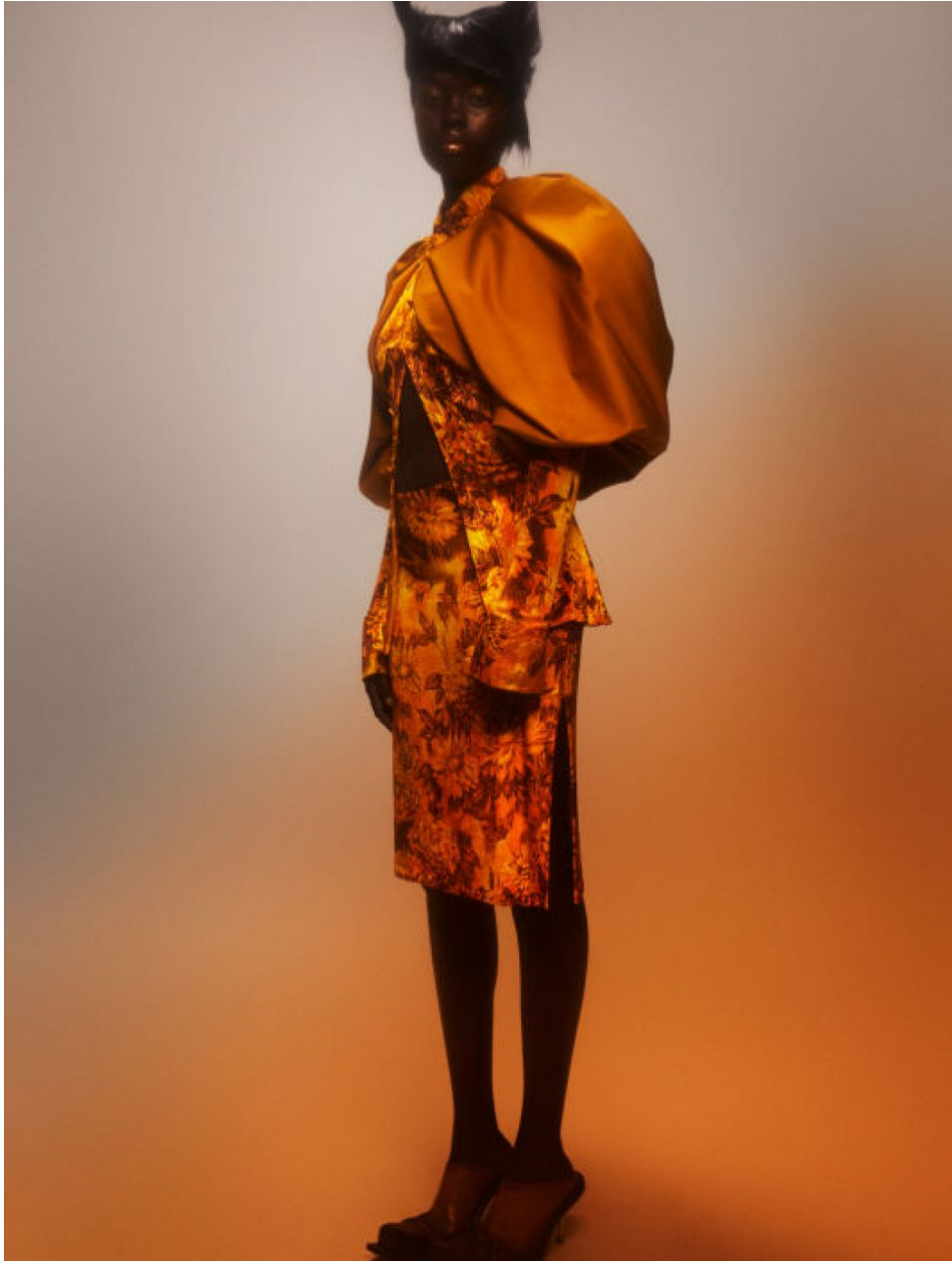
Nyayop wears top and dress by ANIYE BY



Nyayop wears dress by BALENCIAGA



THE HIVE



THE HIVE



THE HIVE

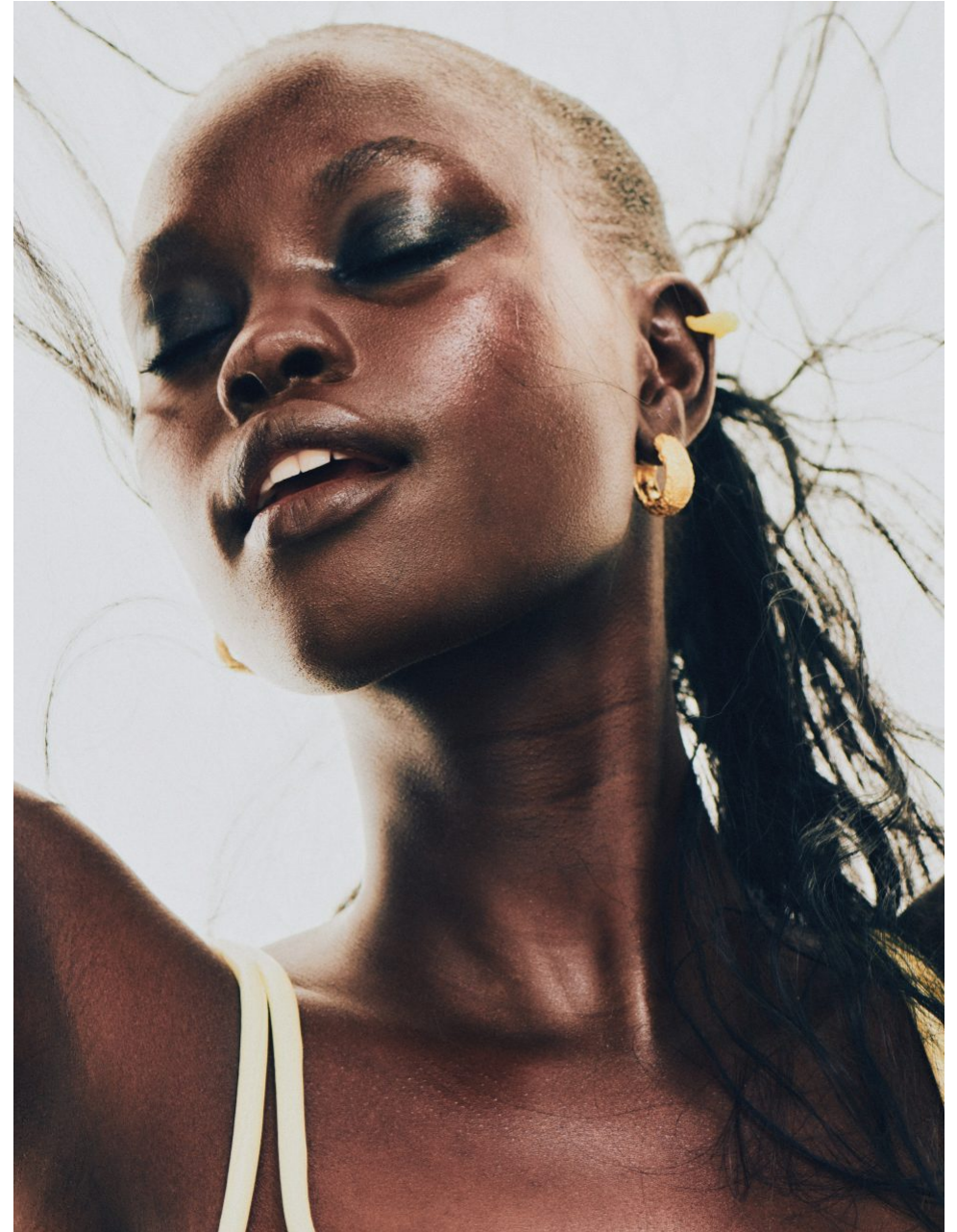


Photographer
— Arved Colvin-Smith
Fashion Editor
— Sorrel Kinder

EVERLASTING

THE SEASONS ICONIC PIECES, EVERLASTINGLY CHIC

THE HIVE



THE HIVE



THE HIVE

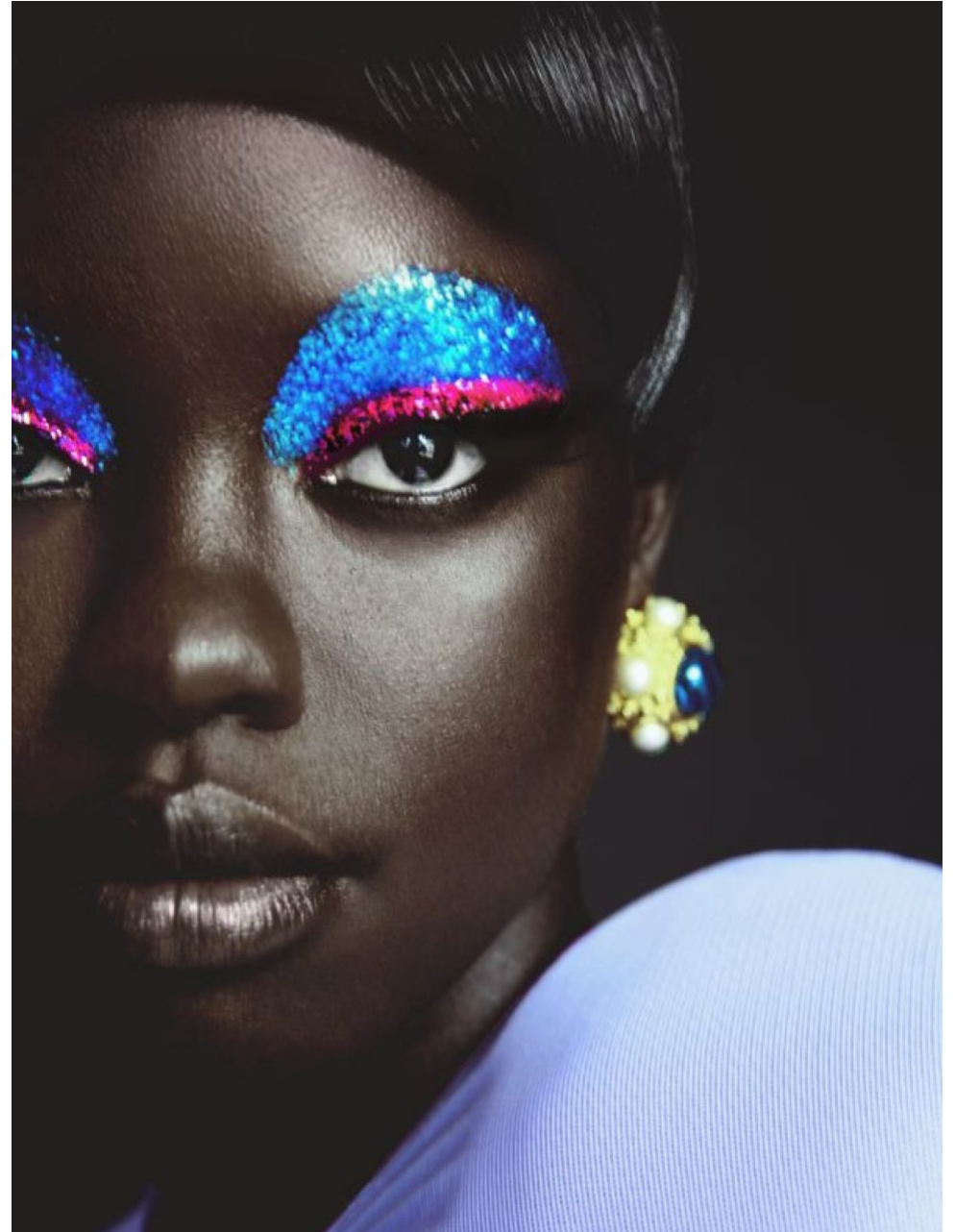


THE HIVE

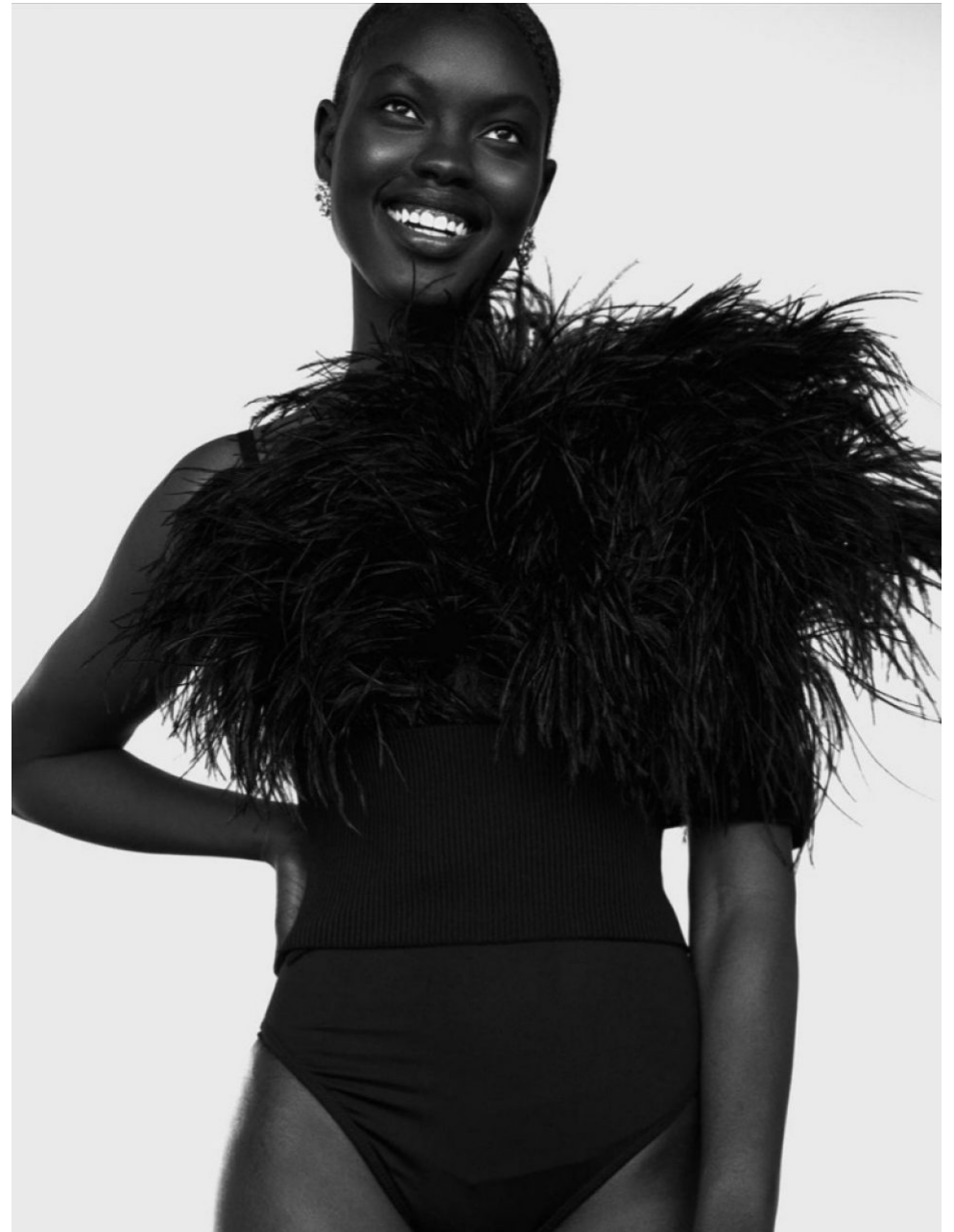


Nyayap (Muse Model Management) usa blusa **Melitta Baumeler** e brincos **Ben-Amin**.
Na pág. ao lado, brincos **Ben-Amin** e colar **Dolce & Gabbana**. Na dupla anterior, brincos **Patricia Von Musulin**.

THE HIVE



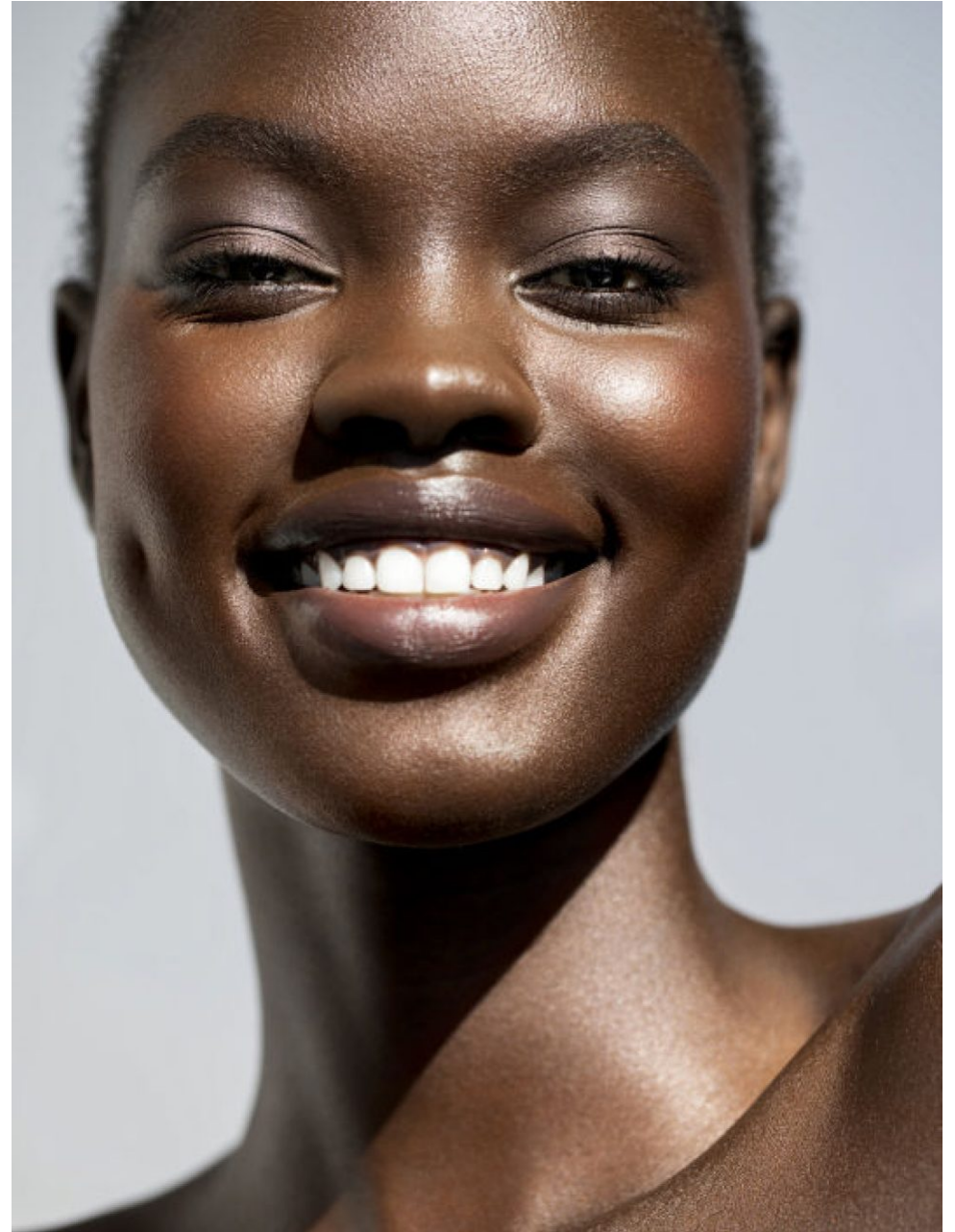
THE HIVE



THE HIVE



THE HIVE



THE HIVE

