

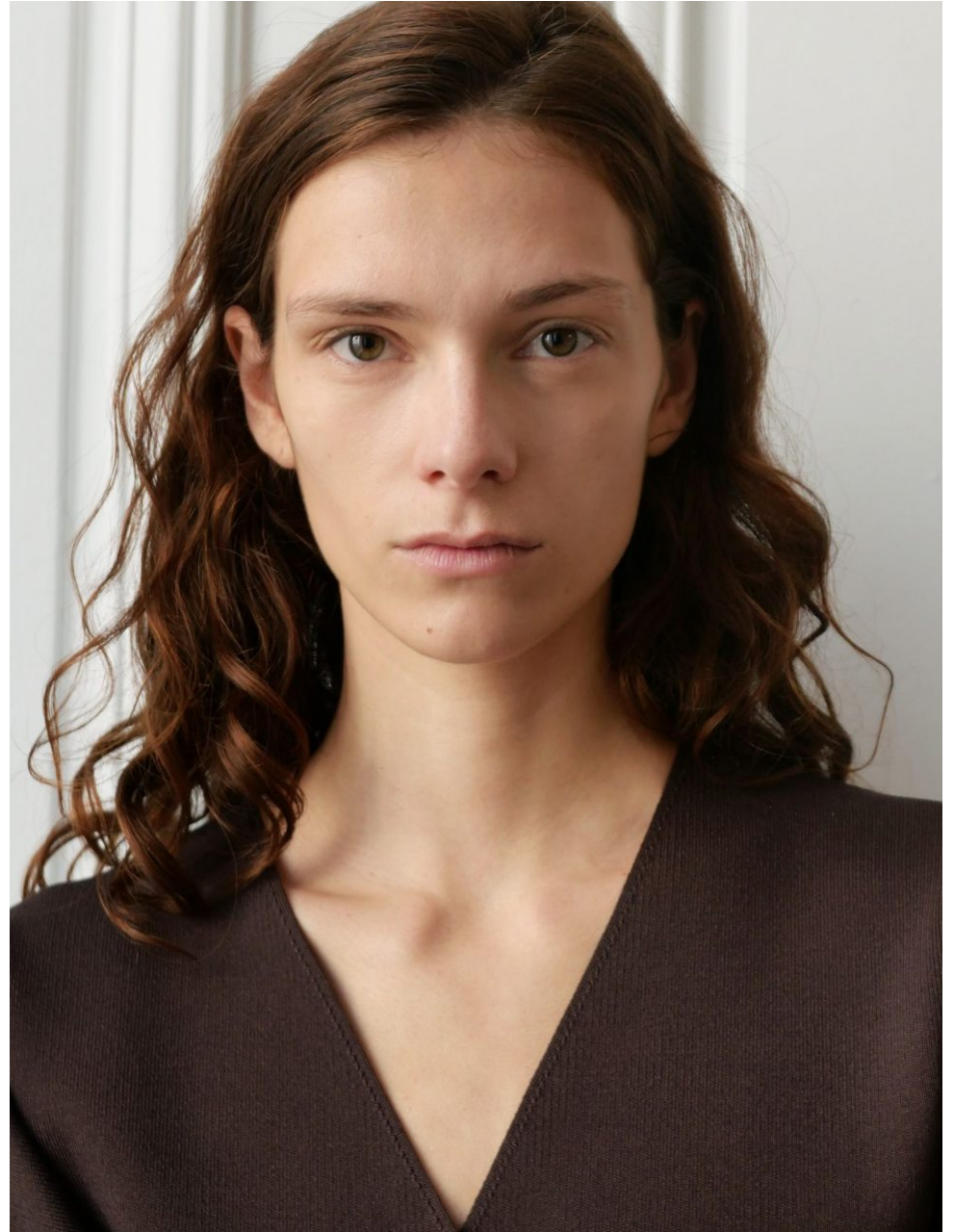
Josephine Guy

UK

Height 5'10 **Bust** 30 **Waist** 25 **Hips** 37.5
Shoes 6 **Hair** Auburn **Eyes** Hazel

EU

Height 1.78 **Bust** 76 **Waist** 63 **Hips** 95
Shoes 39 **Hair** Auburn **Eyes** Hazel



THE HIVE



JIL SANDER+



THE HIVE



The fabulous drapery volume of the black nylon Asako coat by RENAISSANCE RENAISSANCE here worn by Josephine Guy is further enhanced by AMBUSH's gray cut-out wool blazer knotted around the waist. Josephine, who is studying marketing, feels most at home walking in the forests of Colmar, in the Alsace region of France, where she grew up.

225



For this particular field trip, Josephine wears a navy wool pinstriped jacket by PRADA over a black cotton oversized shirt and black cotton trousers, all by RENAISSANCE RENAISSANCE. Josephine is an alpine skier and has been out on the slopes with her family every season since she was a small child.

232

THE HIVE



THE HIVE



THE HIVE



Shirt LEMAIRE, skirt SAKS POTTS • Shirt LEMAIRE, skirt SAKS POTTS • Shirt LEMAIRE, skirt SAKS POTTS • Shirt LEMAIRE, skirt SAKS POTTS

THE HIVE



jacket FIDAN NOVRUZOVA, trousers KATYA ZELENTOVA • jacket FIDAN NOVRUZOVA, trousers KATYA ZELENTOVA • jacket FIDAN NOVRUZ



THE HIVE



!MDress COURRÈGES and trousers A ROEGE HOVE • Dress COURRÈGES and trousers A ROEGE HOVE • Dress COURRÈGES and trousers A ROEGE H

THE HIVE



Cotton polyamide cape and polyamide elastane leggings
Loewe, and calfskin leather bag with metal studs Abra
(Opposite) voile gown
Balenciaga



THE HIVE



THE HIVE



THE HIVE



THE HIVE



THE HIVE



THE HIVE



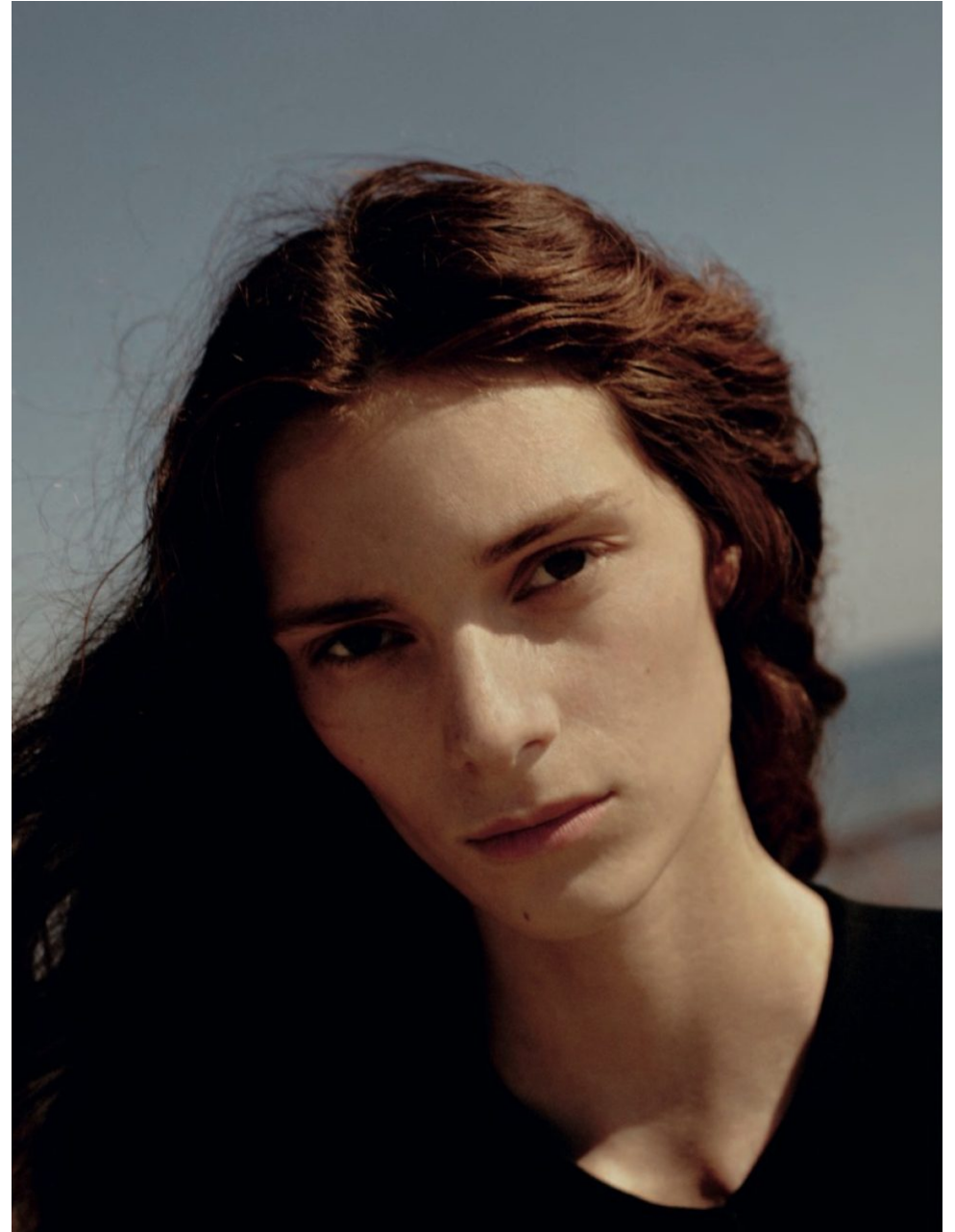
THE HIVE



THE HIVE



THE HIVE



THE HIVE



JIL SANDER+



JIL SANDER+