

Delphi McNicol

UK

Height 5'7.5 **Bust** 32 **Waist** 23 **Hips** 35
Shoes 4.5 **Hair** Blonde **Eyes** Green

EU

Height 1.72 **Bust** 81 **Waist** 59 **Hips** 89.5
Shoes 37.5 **Hair** Blonde **Eyes** Green



THE HIVE



THE HIVE



THE HIVE



THE HIVE



*Black rayon Slab shirt and trousers by TOGA.
Black patent brogues by MALONE SOULIER.*

*right page
White Utopia mini dress by AJE.
silk gold plated 925 silver with white
cubic sirconia earrings by MI MANERA.*

THE HIVE



Antidote
BUYERS CLUB



THE HIVE



THE HIVE



THE HIVE



THE HIVE



THE HIVE



THE HIVE

art official intelligence

photography. damian weilers
art direction. charlotte watts
fashion. hannah beck



oppo
coat. Burberry
shirt. Valentino
tie. Alex Eagle

suit, shirt + shoes. Philosophy di Lorenzo Serafini
hat. Lock & Co. Hatters
bag. KENZO

THE HIVE



THE HIVE



THE HIVE



THE HIVE



Checked green shirt, £1,250, checked
green belt skirt, £1,200, black shoes,
£890, black tie, £310, and black socks,
£128, all D&C. Costume pearl clip-on
earrings, as before. Black saddle
blanket (on horse), £370, HERMÈS

THE HIVE

The Princess

POLISHED AND REFINED, WITH DISTINCTLY EQUESTRIAN DETAILS:

TAKE YOUR CUE FROM *Princess Anne*, WHOSE SEVENTIES WARDROBE

SET THE TONE FOR AW/20 ELEGANCE

Diaries



THE HIVE



THE HIVE



THE HIVE



THE HIVE



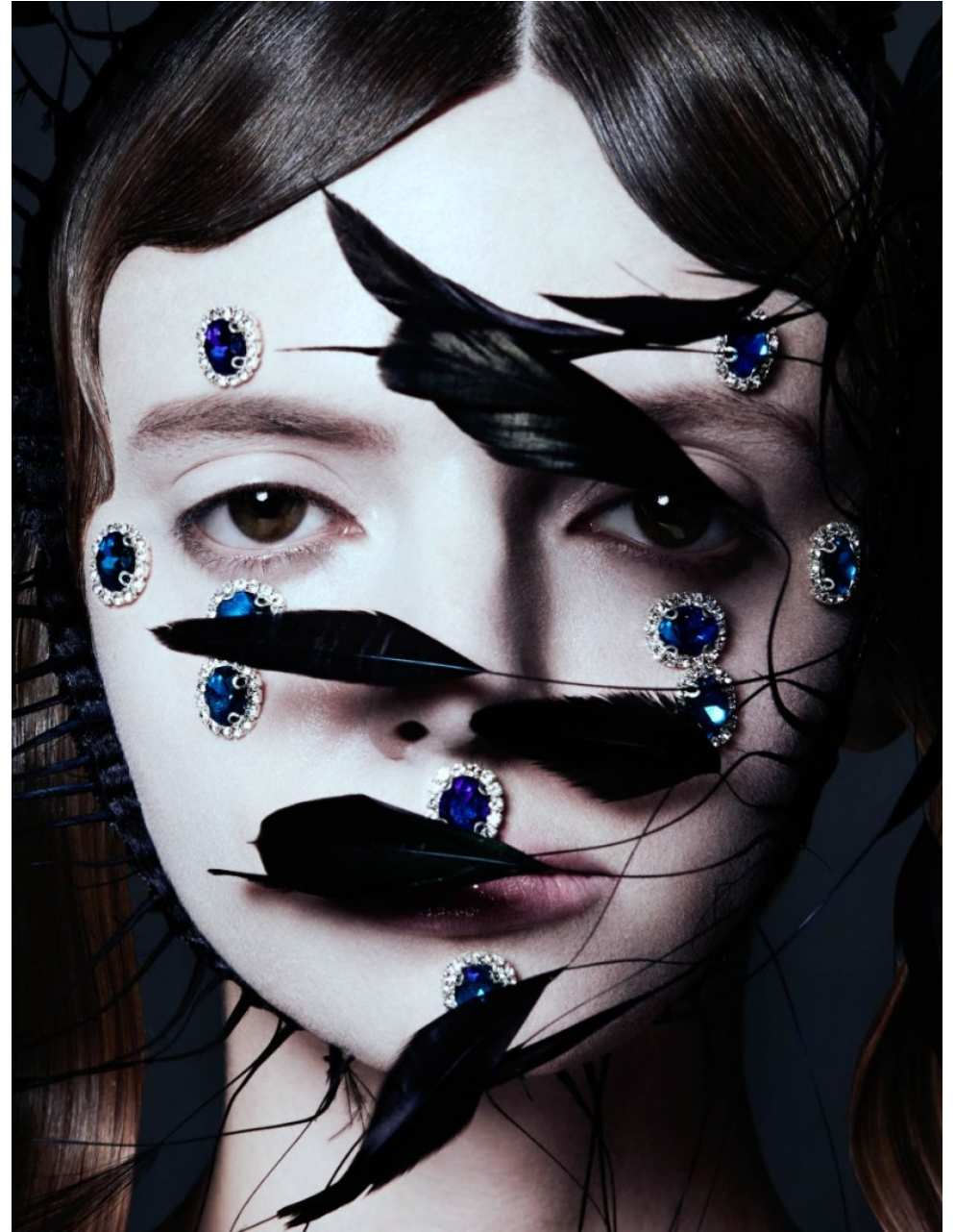
THE HIVE



THE HIVE



THE HIVE



THE HIVE



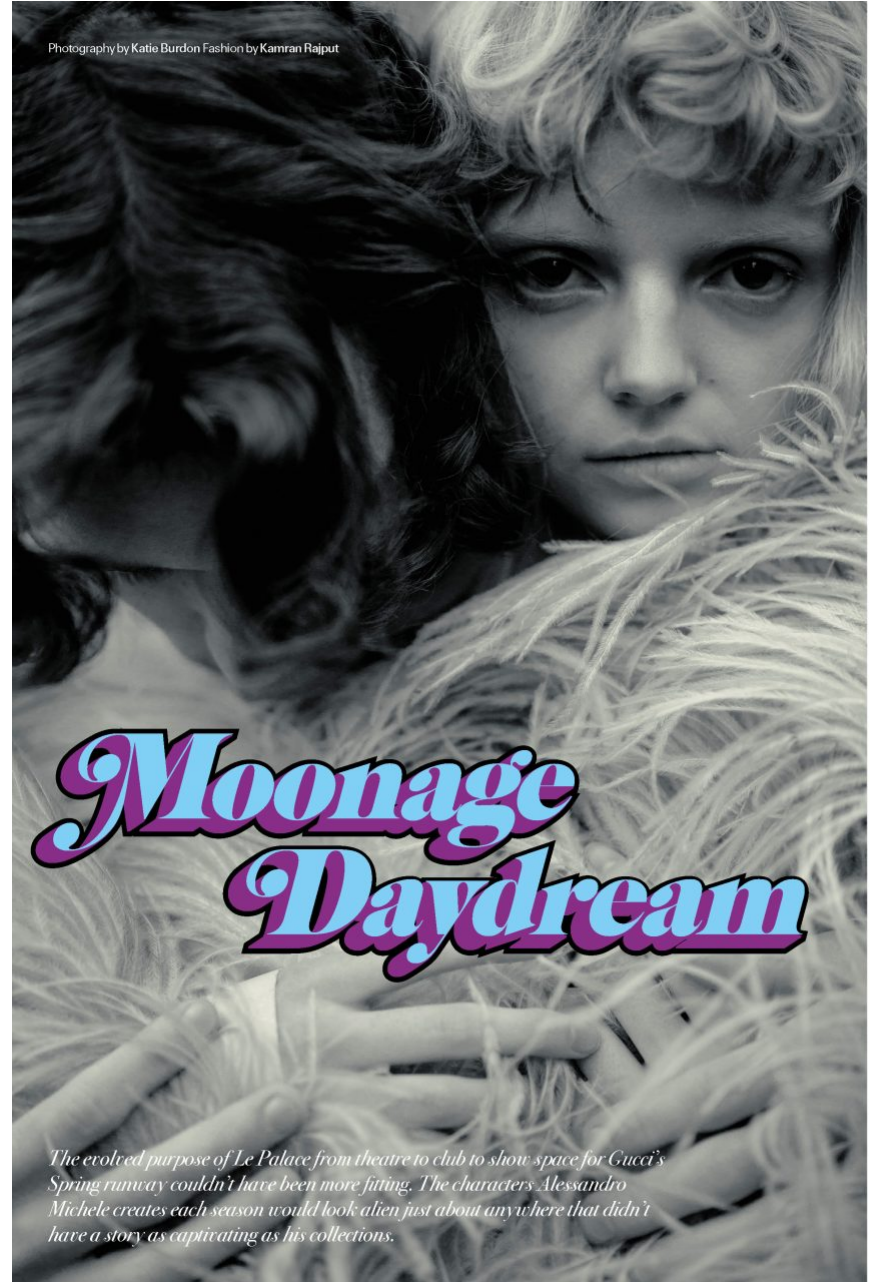
THE HIVE



THE HIVE



THE HIVE



Moonage Daydream

The evolved purpose of Le Palace from theatre to club to show space for Gucci's Spring runway couldn't have been more fitting. The characters Alessandro Michele creates each season would look alien just about anywhere that didn't have a story as captivating as his collections.

THE HIVE



167

Opposite page: Tosin wears sleeveless bomber jacket **Tods**, wool jumper **Chanel**, underwear model's own. This page: Delphi wears garter belt **Agent Provocateur**, swimsuit **Stella McCartney**, bolero puffer jacket **Givenchy**, handbag **Miu Miu**, shoes **archive**, **Undercover**.



174

This page: Delphi wears coat and belt **Replik**, swimsuit **Stella McCartney**, garter belt and stockings **Agent Provocateur**.
Opposite page: Tosin wears bolero puffer jacket **Givenchy**.

THE HIVE



hair KIVOKO ODO at BRYANT ARTISTS using
L'OREAL PROFESSIONNEL PARIS, make-up
AMMY DRAMMEH at BRYANT ARTISTS using
NARS, models GRACE SHARP at MODELS 1,
XUE HUIZI at IMG, DELPHI MICHOUL at THE
HIVE, TEMITOPE AJAYI at MILK, ABEYNI
NIHAL at PREMIER, GOY MANESE, DIANA
ACHAN and DAVE CHOW at PRM, HUGO
FULTON and BABAFEMI MUSTAPHA at
SUPA, LEO COMANESCU at CHAPTER,
TSUNAINA at GO-SEE, set design LIBBY NJOYA
at NEW SCHOOL, photographic assistants JOE
REDDY, JACK SYMES, styling assistants FELIX
PARADZA, MARK MUTYAMBIZI, ANDRA-
AMELIA BUNHAL, LINGANI NOAH, CARI LIMA,
MARINA DE MAGALHAES, hair assistants
KYOSUKE TANZAWA, MARTA MARTINEAU,
MURIEL COLE, make-up assistants QUELLE
BESTER, ISABEL SEO, ELISE PRIESTLEY, set
design assistants AXEL DRIBRY, SAM EDVYN,
BEN ALISON, production CLAIRE BURMAN and
SARAH ARANDA GARZON at CEBE STUDIO,
production manager CELESTE K DOIG, casting
MISCHA NOTCUTT at 11CASTING



THE HIVE



THE HIVE



THE HIVE



THE HIVE



GUCCI



@delphi_mc by @delphi_mc

THE HIVE



THE HIVE

