

Anja Cihoric

UK

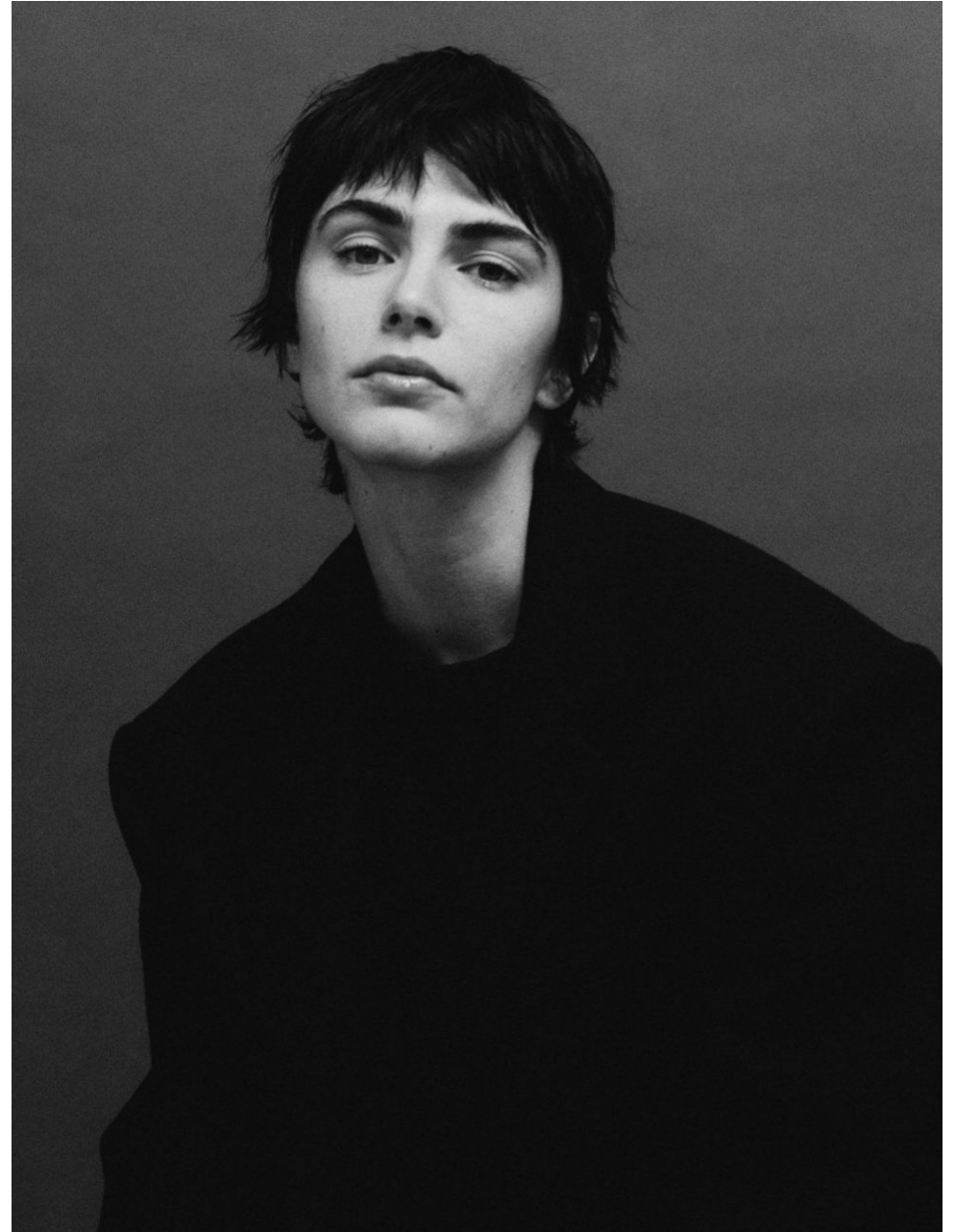
Height 5'11 **Bust** 30 **Waist** 24 **Hips** 35
Shoes 7 **Hair** Brown **Eyes** Green

EU

Height 1.80 **Bust** 78 **Waist** 61 **Hips** 89
Shoes 40 **Hair** Brown **Eyes** Green



THE HIVE



THE HIVE



THE HIVE



THE HIVE



THE HIVE



THE HIVE



THE HIVE



THE HIVE



7 THE NEUTRAL PALETTE

Nothing feels more polished than tonal dressing. Max Mara's sandy-beige ensemble embodies quiet luxury.

Wool and cashmere coat, £3,175; leather belt, £220; both Max Mara. Beige gold and diamond ring, £2,610, Chopard Fine Jewellery.

8

THE POWER OF BALANCE

Master the art of layering – and be ready for all weathers – by mixing fabrics of different weights: try soft, airy cottons and crêpes beneath cossetting cashmere.

Cotton shirt, £370; strappy bralette, from a selection; crêpe skirt, £710, all Max Mara

9

THE PLAID BAG

Pep up a low-key ensemble with a touch of tartan in your accessories.

Suede and calf-skin bag, £2,700, Loewe



STYLE

4

THE SUBTLE SPARKLE

A pair of hoop earrings epitomises easy elegance: Chopard's white-gold design will elevate any outfit.

White gold and diamond earrings, £5,640, Chopard

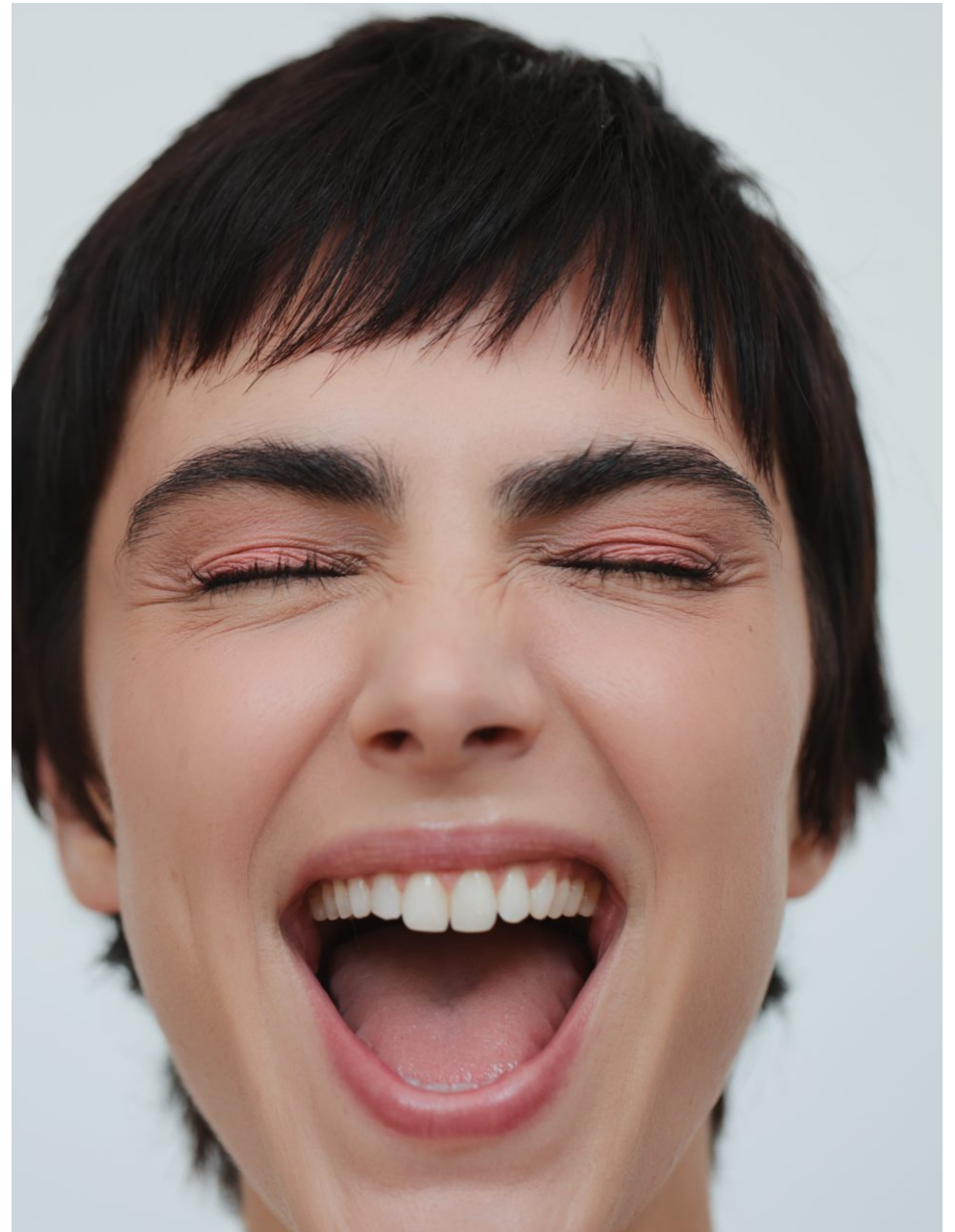
THE NEW LBD

Take a classic style into summer by opting for sheer fabrics and billowing silhouettes.

Crêpe dress, £1,145, Marina Rinaldi

June 2025 HARPER'S BAZAAR 37

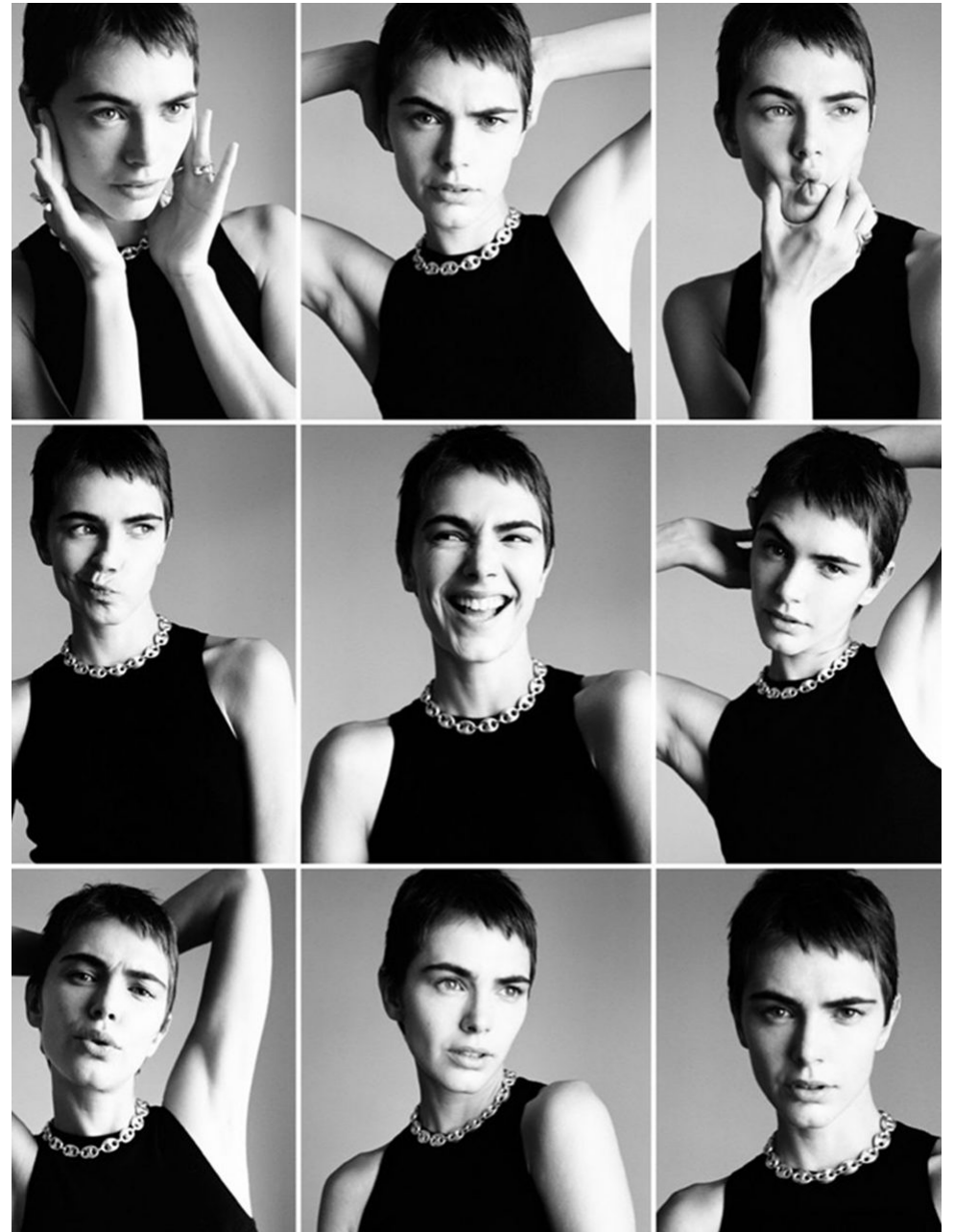
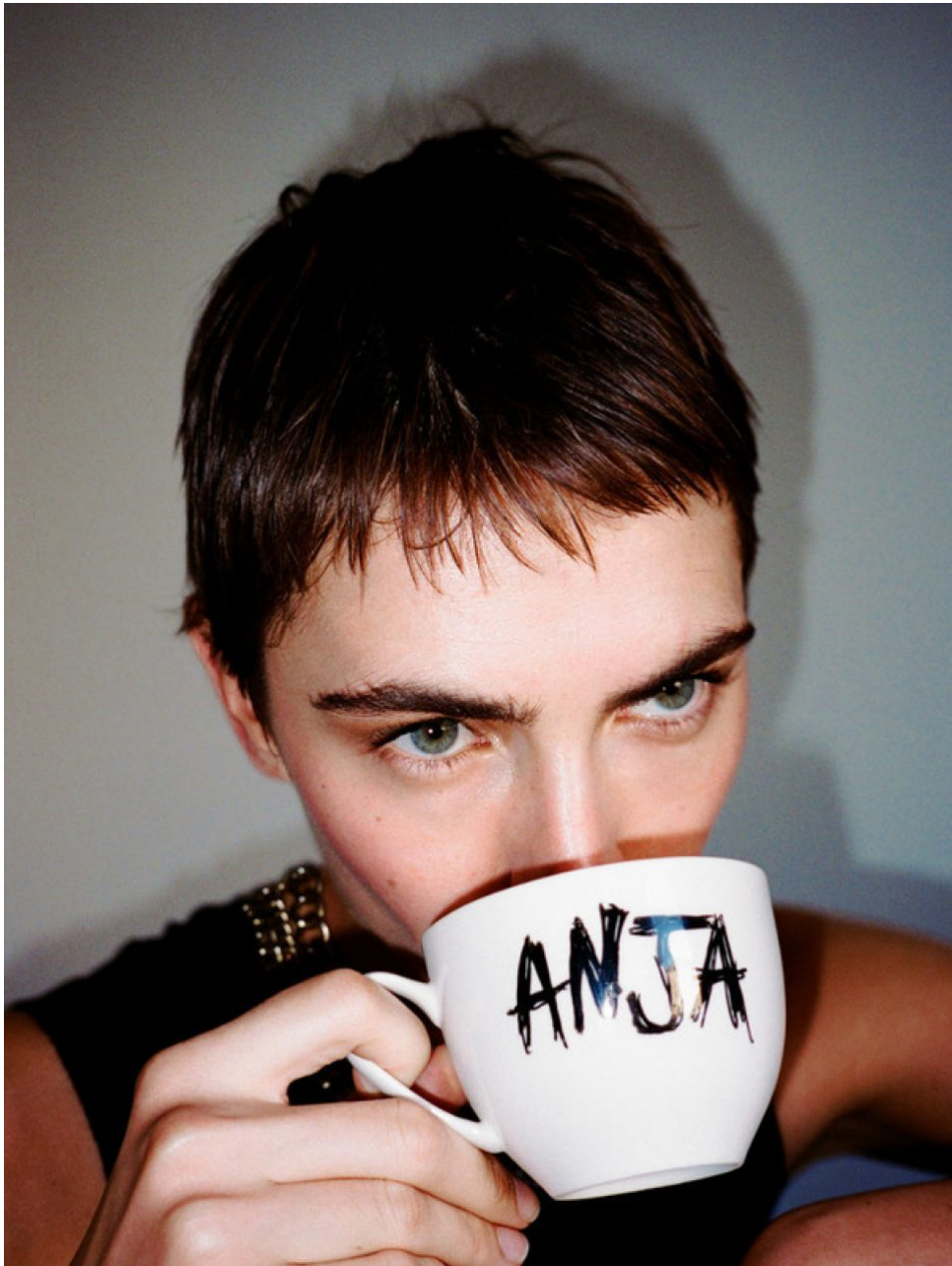
THE HIVE



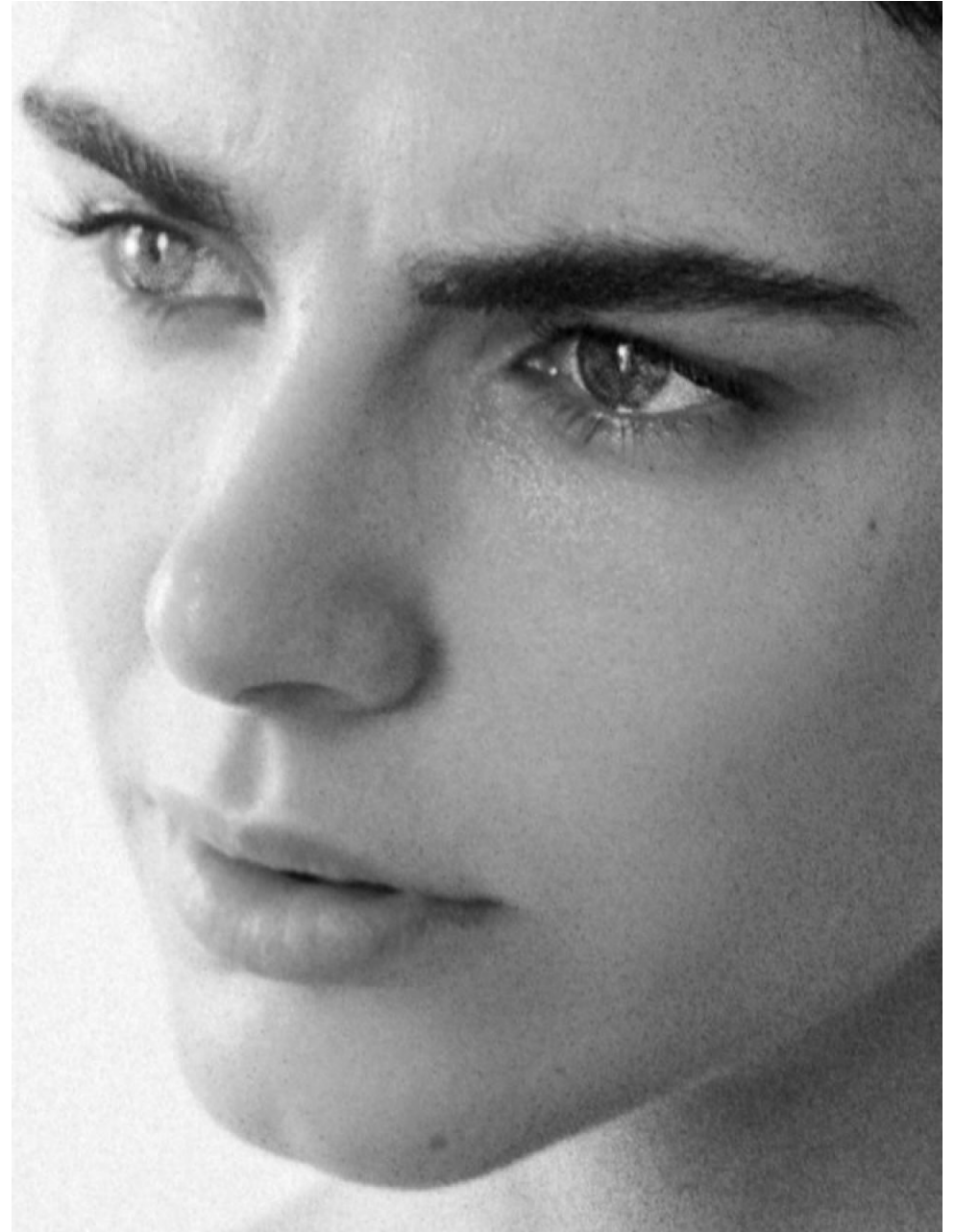
THE HIVE



THE HIVE



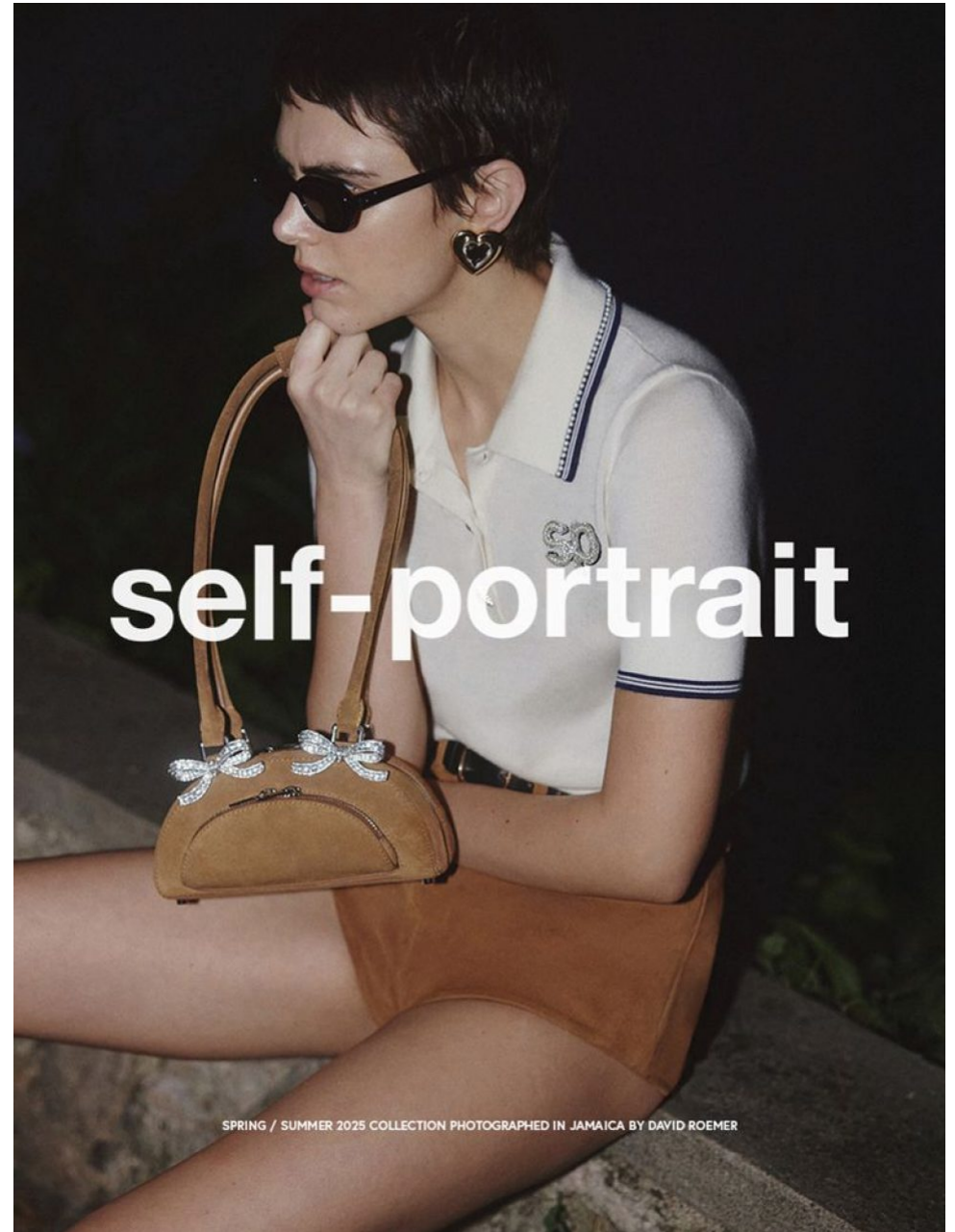
THE HIVE



THE HIVE



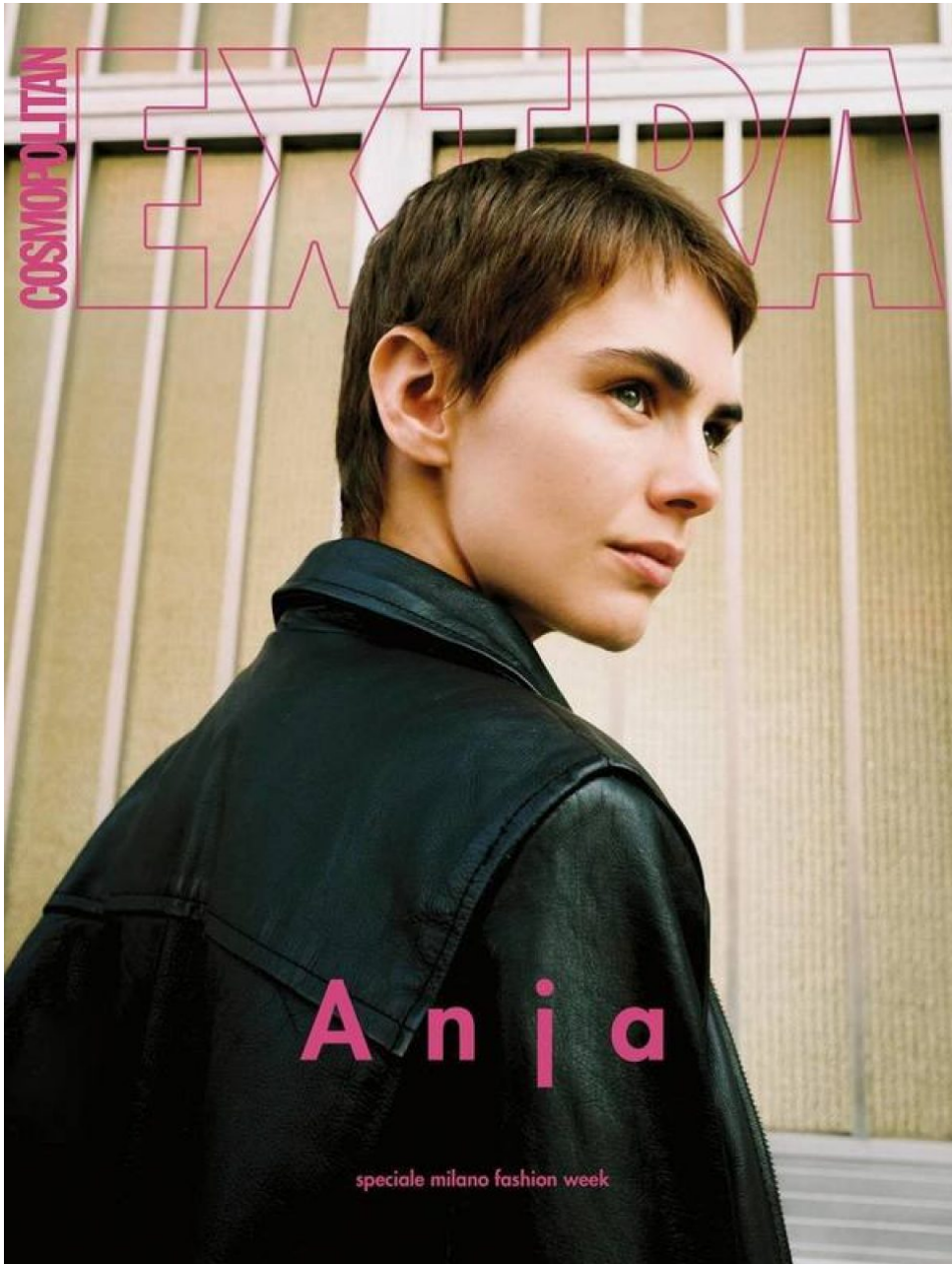
THE HIVE



THE HIVE



THE HIVE



THE HIVE



THE HIVE



THE HIVE

